



Coddington

— C of E —

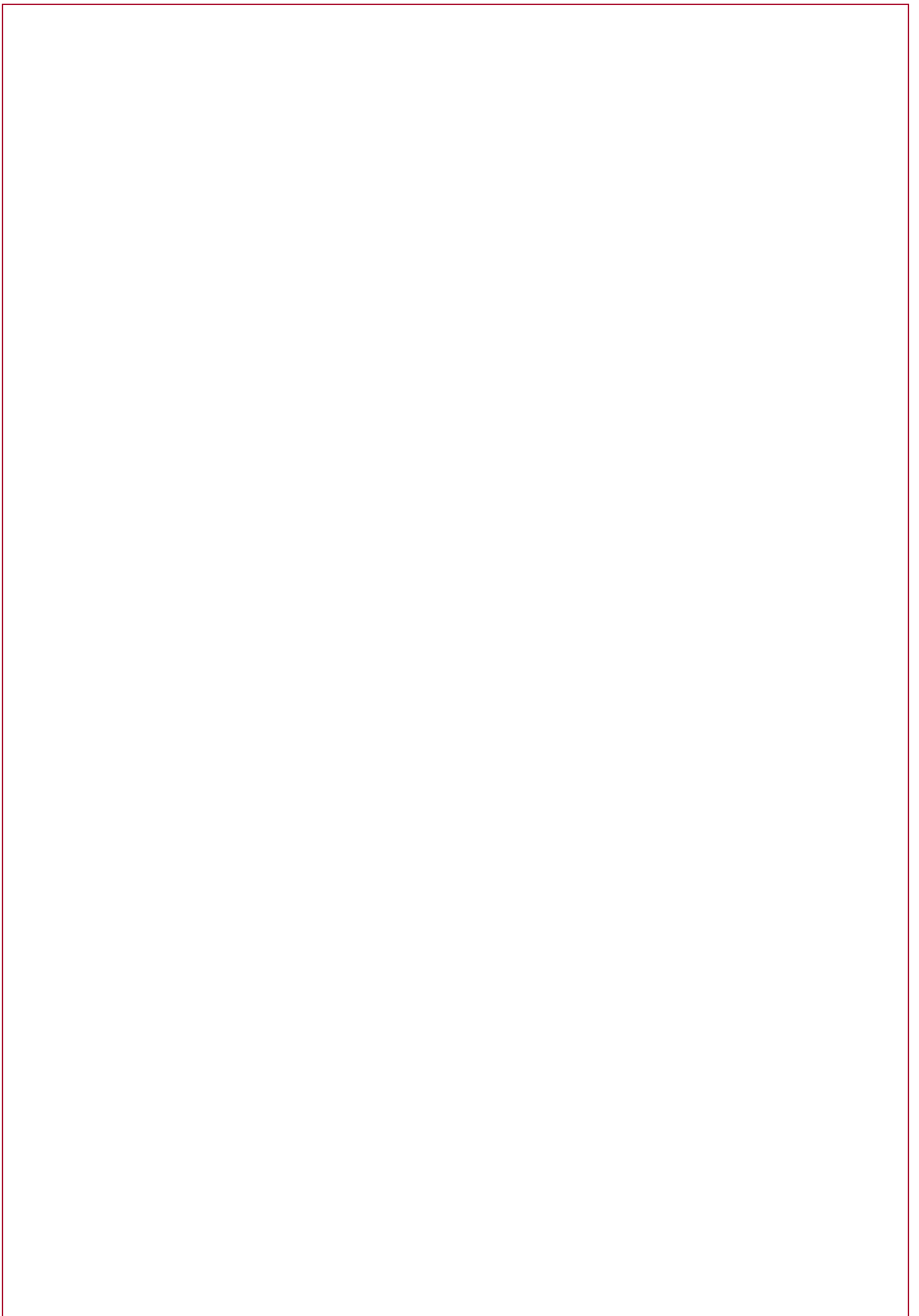
Primary and Nursery
School

Welcome to F2

2025 - 2026

Teaching Team:

Miss Cumper, Miss Young, Mrs Chappell
Mrs Hey (TA), Mrs Draycott (TA),
Mrs Whitehead (HLTA),
Mrs Oxley (HLTA), Mr West (Sports Coach)



Welcome from the Headteacher

Dear Parents and Carers,

It is a pleasure to welcome you to the year ahead at our school.

This booklet has been carefully put together to give you an overview of the exciting curriculum your child will be engaging with over the coming year. It also outlines the rich variety of enrichment opportunities we have planned to support and extend learning beyond the classroom.

At the heart of our school is a commitment to developing the whole child. We believe in creating a safe, inclusive and nurturing environment where every child is encouraged to grow in confidence, curiosity and character. Through high expectations and compassionate guidance, we support children to become lifelong learners.

Our school vision is:

We value each child for who they are and prepare them for who they can become.

Our school values are:

Care, Community and Courage

These values underpin everything we do, from our curriculum choices to our everyday interactions. We encourage our children to act with kindness, to build strong relationships, and to approach challenges with resilience and determination.

As a Church of England school, we draw inspiration from the verse:
'Encourage one another and build each other up.' (1 Thessalonians 5:11)

Working in partnership with parents and carers is essential to your child's success, and we are committed to maintaining strong communication between home and school. We primarily use Class Dojo to keep in touch, and you'll find further information and updates on our school website throughout the year.

Thank you for your continued support. I am excited for the year ahead and look forward to seeing your child thrive in every aspect of school life.

With warm regards,

Mrs R. Major
Headteacher

EYFS Curriculum

DISCOVER TERM (History Focus): Are we all the same?

During Autumn 1 we will spend lots of time getting to know each other and building new friendships. We will be discussing our similarities and differences by talking about our families, homes and our likes and dislikes. We will listen to stories including The Colour Monster, Freddie and the Fairy and When I was Little. We will use these stories to help answer our big question 'Are we all the same?'. In Autumn 2 we will read 'The Tiger Who Came to Tea' and use this to compare homes in the past and present. We will find out about the different celebrations that people around the world enjoy when reading 'Little Glow'. At the end of the term, we will explore 'The Jolly Christmas Postman' where we will write our own letters and enjoy time in the post office role play area! The children will participate in our Nativity, what a busy start!

EXPLORE TERM (Geography Focus): Where is my place in the world?

We will read 'Penguin Small' to help support us to learn facts about the life of a penguin! We will explore life cycles, focussing on the life cycle of a penguin and learn lots of new vocabulary such as 'fledgling'! We will use maps, globes to explore our local area on Google Maps. We will make our own boats and test them to see whether they will float or sink. In Autumn 2 we will focus on countries around the world. We will compare Peru to the UK when reading 'Paddington's Post'. We will travel around the world when reading 'Emma Jane's Aeroplane' and locate the different countries on the map.

CREATE TERM (Art Focus): I wonder where art can be found?

We will have a very colourful start to the term when we explore 'The Day the Crayons Quit'. We will make dioramas out of shoe boxes which represent the sweetie house from the story Hansel and Gretel. We will learn about the famous artist 'Yayoi Kusama' and recreate some of her famous dotty artwork. We will also learn that we can turn mistakes into beautiful pieces of artwork when reading the 'Beautiful Oops!'. In summer 2 we will focus on art outside in our natural environment. We will then explore the seaside. We will explore the artist 'George Seurat' and create art in the style of him. We will enjoy listening to and retelling stories including 'Sharing a Shell', 'The Storm Whale' and 'Clean Up!' and learn about looking after our planet.

English Writing:

- Write recognisable letters, most of which are correctly formed.
- Spell words by identifying sounds in them and representing the sounds with a letter or letters.
- Write simple phrases and sentences that can be read by others.

Maths:

- Repeating patterns
- Have a deep understanding of number to 10, including the composition of each number.
- Subitise (recognise quantities without counting) up to 5.
- Automatically recall (without reference to rhymes, counting or other aids) number bonds up to 5 (including subtraction facts) and some number bonds to 10, including double facts.

Books we will read:

The Colour Monster
Freddie and the Fairy
When I was Little
The Tiger Who Came To Tea
Jesus' Christmas Party
The Jolly Christmas Postman
Penguin Small
The Great Explorer
The Ugly Five
Paddington's Post
Emma Jane's Aeroplane Little
People Big Dreams – David
Attenborough
The Day the Crayons Quit
The Dot
Beautiful Oops
Sharing a Shell
The Storm Whale
Clean Up

Projects we will create:

- Baking
- Making boats
- Story dioramas

Phonics:

- Fred Talk (oral blending)
- Set 1 and 2 sounds

Sport/PE we will play:

- Throwing
- Catching
- Kicking
- Passing
- Running
- Jumping
- Dancing
- Hopping



Coddington
— C of E —
Primary and Nursery
School

RE:

- Celebrations
- Stories
- Belonging
- Special places
- Special people
- Caring for our world

Music we will hear:

- Nativity songs
- Nursery rhymes
- Action songs
- Songs during singing Collective Worship

PSHE topics:

- Who am I and how do I fit?
- Respect for similarity and difference
- Anti-bullying
- Being unique
- Being and keeping safe and healthy
- Building positive, healthy relationships
- Coping positively with change
- NSPCC PANTS

Computing:

- The different uses of technology
- Respecting the work of others online
- Staying safe online

Calendar of Events

September	INSET Day – Monday 1 st First day – Tuesday 2 nd RWI parent meeting – Tuesday 16 th (3.30 – 4.15) School Photos (single & siblings) – Wednesday 17 th
October	Parents' Evening – Tuesday 7 th & Thursday 9 th Harvest Festival 10 th INSET day – Friday 17 th
November	Book Fair – 6 th -10 th Discover Day (Focus on WW2) Monday 11 th Children in Need (Break the Rules Day!) – Friday 14 th 'Sparkle & Shine' Disco – Friday 21 st
December	Christmas Fair – Friday 5 th (5:30 -7:30) Trip to Newark Palace Theatre to watch Beauty and the Beast – Wednesday 10 th Christmas Jumper day – Thursday 11 th Christmas Dinner Day – Thursday 11 th Nativity – Tuesday 9 th at 2pm and Friday 12 th at 10am Christmas Class Party Day - Thursday 18 th INSET Day – Friday 19 th
January	Pirate Island Drama Workshop – date TBC Resilience Week – Monday 12 th - Friday 16 th
February	Explore Day (Focus on Africa) – Tuesday 10 th INSET – Friday 13 th
March	World Book Day – Thursday 5 th (Fancy dress as book character/pyjamas) Non-Fiction Author – Friday 6 th Science Day – Friday 13 th Parents Evening – Tuesday 17 th and Thursday 19 th Animal Roadshow – date TBC Easter bonnet parade - Friday 27 th (EYFS / KS1 only) Spring Hawaiian Luau - Friday 27 th
April	
May	School photos – Monday 18 th Create Day (Focus on the Purpose of Art)– Friday 15 th
June	INSET Day – Monday 1 st Music Create Day- Tuesday 16 th Sports Week Monday 22 nd to Friday 26 th Sports Day -Thursday 25 th Summer Fair – Saturday 27 th Southwell Minster Trip – date TBC Artist visit – date TBC
July	New class information shared – Friday 10 th Transition Afternoon – Wednesday 15 th Reports shared– Friday 17 th Bounce About and Leaver's Party – Tuesday 21 st

Trips and Event Costings

<i>Date</i>	<i>Trip/ Event</i>	<i>Approx. Cost</i>	<i>Payment Due</i>
21 st Nov	School Disco (optional)	£3.50	6 th Oct
10 th December	Trip to Newark Palace Theatre to watch the pantomime	£15.00	6 th Oct
January	Pirate Island Drama Workshop	£7.00	Dec
27 th March	School Disco (optional)	£3.50	26 th Jan
March	Animal Roadshow	£8.00	Feb
June	Southwell Minster Trip	£12.00	May
June	Artist Visit	TBC	May
21 st July	Bounce About	£5.00	July

*All costs and dates are correct at the time of printing.

Payments

We are a cashless school and collect all payments for trips and events through a website called ParentPay. We are looking to change our payment system in this academic year and connecting it with our internal information system. Please look out for details on this.

The school office can provide you with login details to ParentPay and as a family you will be able to manage the payments accordingly.

If you are in receipt of free school meals, please contact the office for reduced amounts or flexible payment options.

If you are not in receipt of free school meals but will struggle to fund these activities, please do so or talk to Mrs Hanstock who will be able to sign post support such as the Coddington Trust Fund.

We do not want money to ever be a barrier to children having these experiences so please reach out to us if you have concerns.

Uniform & Equipment Expectations

As we begin the new school year, we are tightening up on expectations around uniform, PE kits, jewellery, and other items brought into school. We appreciate your support in helping us maintain high standards for all our pupils.

Uniform

Our school uniform is:

- Burgundy jumper or cardigan
- Pale blue polo shirt
- Dark grey trousers, shorts, dress, or skirt
- *Summer option:* pale blue summer dress
- Plain black shoes (no trainers)
- White, black, or grey socks



Clothing does not need to have the school logo, although it is welcome.

Jewellery & Appearance

- Children may wear single studs in their ears only – no other jewellery
- No make-up, nail varnish or fake nails
- Watches are allowed (not smart watches)
- Hair should be neat and appropriate – no unnatural colours or extreme styles
- Hair accessories must be discreet in size, design, and colour
- Religious headdress must be either black or blue and non-patterned

PE Kit

- Plain black hooded top (school logo optional – no other logos)
- Plain pale blue t-shirt or the new 'sports t-shirt' available now on WiglePrint
- Black tracksuit trousers, leggings, or shorts (shorts should be of appropriate length)
- Trainers
- Long hair must be tied up on PE days

Other Equipment

- Children should bring a water bottle of appropriate size with a secure, locking lid. Stanley Cups are not suitable
- Please do not bring in any stationery or toys from home
- Please bring in one pair of wellies for children to use when they are in the outdoor area

Healthy Eating

Acceptable Snacks

Fresh Fruits and Vegetables e.g *apple, banana, carrot sticks, grapes, cucumber, cherry tomatoes* (All children in F2 and KS1 receive a free of fruit or vegetable everyday as part of the Government's School Fruit and Vegetable scheme).

Whole Grains

Snacks like whole grain crackers, breadsticks, rice cakes, or oat bars (low in sugar)

Dairy

Cheese cubes or yogurt (low sugar)

No ultra-processed

Crisps, chocolate, sweets, packaged biscuits, or other packaged snacks high in fat or salt are not permitted.

Portion Control

Snacks should be modest in size – just enough to tide children over between meals.

Water Only

Water is the only drink allowed during the day. If your child won't drink water, please speak to the class teacher.

School Meals

We can provide a fresh, healthy meal cooked on the school site daily.

Families can decide daily if they would like their child to have:

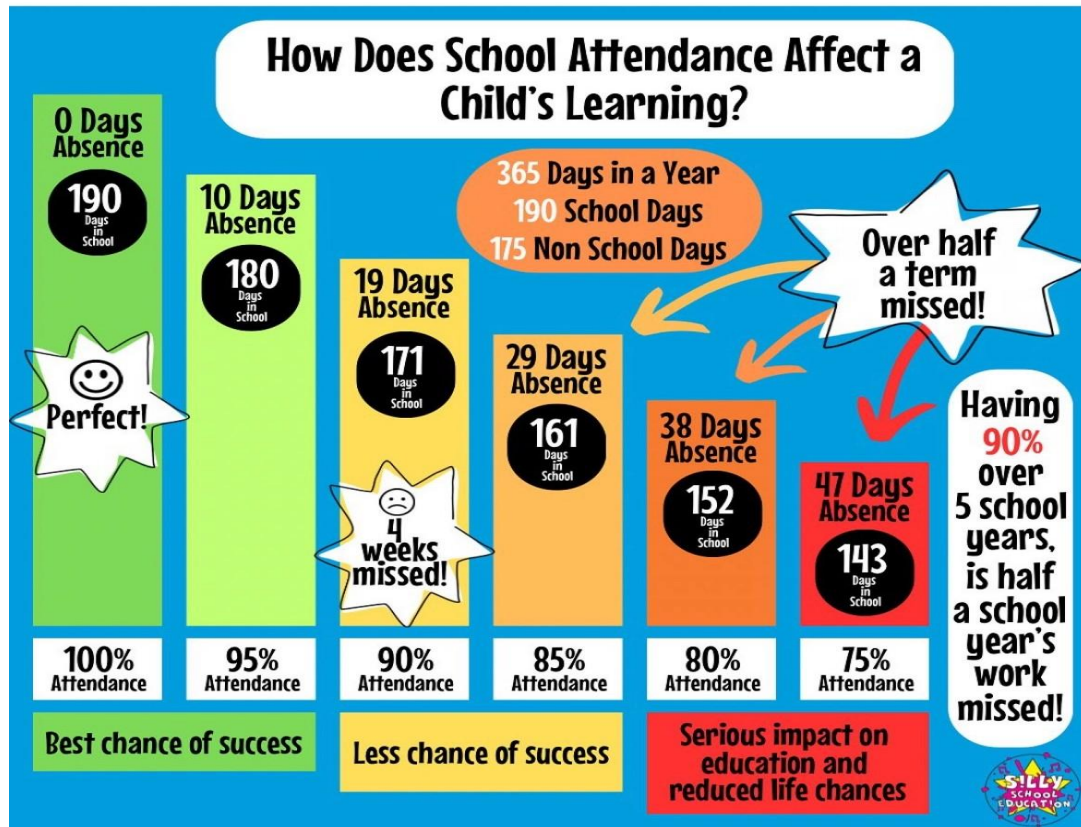
- A hot dinner, a three-week menu is provided on the website
- A cold meal, either cheese, ham or tuna mayonnaise sandwich
- A panini, either cheese or ham
- A jacket potato with cheese, cheese and beans or tuna mayonnaise

Children may decide to bring a healthy packed lunch instead (no hot food please).

Whilst the register is being taken in the morning the children will be asked what they are having for lunch. There is no need to pre-order.

School lunches are £3.16 a day and payments are added to ParentPay. Foundation, Year 1 and Year 2 children are eligible for universal free school meals and therefore there is no cost for these year groups.

Attendance



We know that sometimes our pupils cannot come to school because they are really unwell - and that's the right thing to do for them and other pupils. Medical advice is clear however that children with mild illness will often be well enough to attend - for example if they have a cough, or cold, without a temperature. The NHS also states that children who are taking antibiotics can still attend school. The NHS guidance 'Is my child too ill for school?' - NHS (www.nhs.uk) is designed to support parents in their decision making about mild illness.

We also know that pupils fall behind their friends and classmates when they miss school. We want the amount of missed education to be reduced as much as possible.

We believe that our community is stronger together, with all our pupils in school, on time, every day.

We are building life skills, life-long friendships and preparing your child for future success – we can only do this, if they are in school.

How to best support your child's learning

The most important way to support your child's learning is to ensure they attend school every day, arrive on time, and are ready to learn!

Here are other effective ways you can support your child's education:

- Show interest in what they are learning at school.
- Set a regular routine for homework and bedtime.
- Communicate regularly with their teachers.
- Encourage a positive attitude toward learning.
- Promote healthy habits like good nutrition, exercise, and sleep.

Questions to ask your child after school

"Did you have a good day?" can be overwhelming for a child and leads to single word answers. Below is a list of questions which can create more specific responses

- What made you feel proud today?
- Did anything make you laugh today?
- What was something new you learned today?
- What was the most challenging part of your day?
- How did you help someone today?
- Did anyone help you with something?

Other ways you could support your child's learning are listed below:

Maths <ul style="list-style-type: none">• Encourage your child to count objects independently e.g. pass me 3 carrots• Watch Numberblocks videos	Reading <ul style="list-style-type: none">• Read to your child – share a bedtime book together
Phonics <ul style="list-style-type: none">• Watch the RWI video links that will be sent home via Class Dojo	Understanding the World <ul style="list-style-type: none">• Talk about what they see in the environment• Talk about the weather and seasons• Talk about people in our community

Signposting

Safeguarding: If you have a safeguarding concern, please consider if you need to contact the police or social services first (0300 500 80 90). If you do need contact the school, please email head@coddingtonprimary.org.uk

Family Engagement Officer: Mrs Hanstock works closely with school staff, local community services, preventative services, and social services to ensure that the needs of the children are being met. She also supports children's pastoral needs including emotional, social, welfare, care and health.
Tel: 01636 702974 Email: n.hanstock@coddingtonprimary.org.uk

Pupil Premium: Mrs Penn is our Pupil Champion and leads on the funding and support for Pupil Premium, Looked After Children and Post Looked After Children.
Tel: 01636 702974 Email: l.penn@coddingtonprimary.org.uk

SENDCo: Miss Cumper (Maternity cover for Mrs Mercer) is our Special Educational Needs and Disability Co-ordinator and leads on the funding and support for SEND and EAL children.
Tel: 01636 702974 Email: SENDCO@coddingtonprimary.org.uk

Speech and Language: Mrs Connor leads on Speech and Language across the school. If you are concerned about your child's speech, please contact Mrs Connor or your class teacher.
Tel: 01636 702974 Email: r.connor@coddingtonprimary.org.uk

Governors: Sarah Evans is our Chair of Governors. If you need to contact the Governors for any reason (other than can be dealt reasonably by the Head Teacher).
Email: governor@coddingtonprimary.org.uk

Friends of Coddington School: This is our PTA group. You can find them on Facebook or please email them directly if you would like to get involved.
Email: friendsofcoddingtonschool@outlook.com

Ask Us Notts: local information and advice for Nottinghamshire residents. www.askusnotts.org.uk

Food Bank: Collingham Food Pantry collinghamfoodbank@gmail.com

Home-Start Newark: Home-Start Newark helps families with young children deal with whatever life throws at them. They support parents as they learn to cope, improve their confidence and build better lives for their children. www.homestartnewark.co.uk Tel: 01636 705011

Mind: For free mental health and advice for men and women. www.mind.org.uk Tel: 0300 123 3393

Newark Women's Aid: Newark Women's Aid is an independent, local charity providing specialist services to support women with or without children who have experienced physical, sexual, emotional, psychological, or economic abuse.
Phone: 01636 679687 Email: newarkwomensaid@btconnect.com

School Calendar

2025-2026



Coddington

— C of E —
Primary and Nursery
School

Term dates for pupils

Autumn term 2025

School opens – Tuesday 2 September 2025
Half term - Monday 20 October 2025 to Friday 31 October 2025.

School closes for Christmas – evening Thursday 18 December 2025.

Spring term 2026

School opens – Monday 5 January 2026
Half term - Monday 16 February 2026 to Friday 20 February 2026.

School closes for Easter – evening Friday 27 March 2026.

Summer term 2026

School opens - Monday 13 April 2026
Half term – Monday 25 May 2026 to Friday 29 May 2026.

School Closes for the summer – evening Friday 24 July 2026.

SEPTEMBER							OCTOBER							NOVEMBER						
M	T	W	T	F	S	S	M	T	W	T	F	S	S	M	T	W	T	F	S	S
1	2	3	4	5	6	7	6	7	8	9	10	11	12	3	4	5	6	7	8	9
8	9	10	11	12	13	14	13	14	15	16	17	18	19	10	11	12	13	14	15	16
15	16	17	18	19	20	21	20	21	22	23	24	25	26	17	18	19	20	21	22	23
22	23	24	25	26	27	28	27	28	29	30	31	24	25	26	27	28	29	30		
29	30																			

DECEMBER							JANUARY							FEBRUARY						
M	T	W	T	F	S	S	M	T	W	T	F	S	S	M	T	W	T	F	S	S
1	2	3	4	5	6	7	1	2	3	4	2	3	4	5	6	7	8			
8	9	10	11	12	13	14	5	6	7	8	9	10	11	9	10	11	12	13	14	15
15	16	17	18	19	20	21	12	13	14	15	16	17	18	16	17	18	19	20	21	22
22	23	24	25	26	27	28	19	20	21	22	23	24	25	23	24	25	26	27	28	
29	30	31					26	27	28	29	30	31								

MARCH							APRIL							MAY						
M	T	W	T	F	S	S	M	T	W	T	F	S	S	M	T	W	T	F	S	S
2	3	4	5	6	7	8	6	7	8	9	10	4	5	6	7	8	9	10		
9	10	11	12	13	14	15	13	14	15	16	17	18	19	11	12	13	14	15	16	17
16	17	18	19	20	21	22	20	21	22	23	24	25	26	18	19	20	21	22	23	24
23	24	25	26	27	28	29	27	28	29	30	31	25	26	27	28	29	30	31		
30	31																			

JUNE							JULY							AUGUST						
M	T	W	T	F	S	S	M	T	W	T	F	S	S	M	T	W	T	F	S	S
1	2	3	4	5	6	7	6	7	8	9	10	11	12	3	4	5	6	7	8	9
8	9	10	11	12	13	14	13	14	15	16	17	18	19	10	11	12	13	14	15	16
15	16	17	18	19	20	21	20	21	22	23	24	25	26	17	18	19	20	21	22	23
22	23	24	25	26	27	28	27	28	29	30	31	24	25	26	27	28	29	30		
29	30											31								

School Holidays

Public Holidays

Administration Day