



Coddington

— C of E —

Primary and Nursery
School

Welcome to Year 6

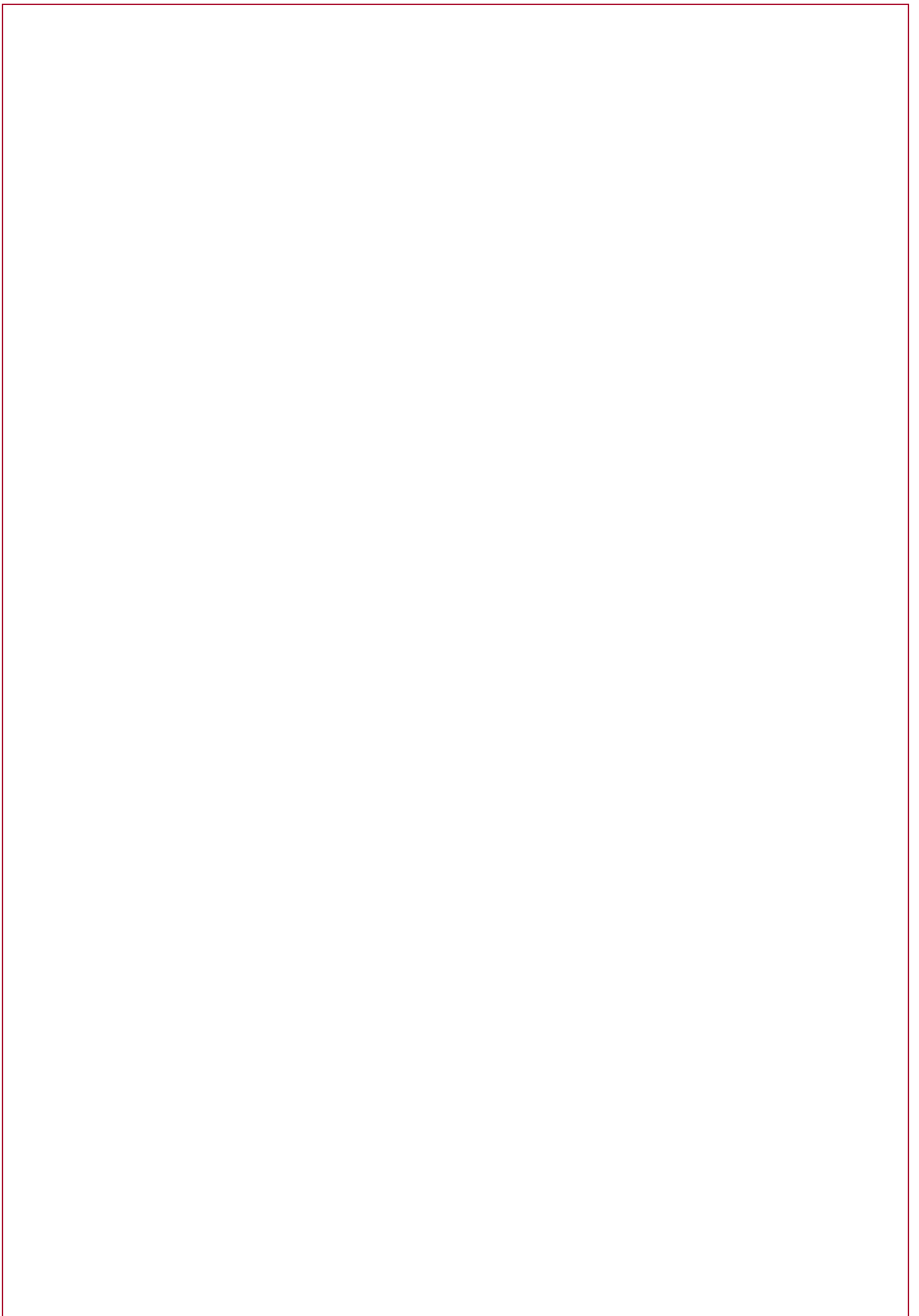
2024 - 2025

Teaching Team:

Mrs Penn, Mrs Swift and Mrs Pell-Reynolds

Mrs Sahall (TA), Miss Parker (HLTA/PPA cover), Mr West (Sports Coach)

Mrs Plowman (HLTA)



Welcome from the Headteacher

I am delighted to introduce you to your child's next year of learning. This booklet aims to provide you with an overview of the broad curriculum your child will engage with over the coming academic year. It also details the enrichment opportunities teachers have planned to enhance the children's knowledge, skills and experience.

It is important to me that our school develops the whole child, and I am committed to creating a positive and nurturing environment where all children can explore, learn and grow, both personally and academically.

Our school vision is:

We value each child for who they are and prepare them for who they can become.

Our school values are:

Care, Community and Courage

As a school, we recognise that everyone matters, we are all neighbours, and we must act with both compassion and bravery. We want children to be inquisitive of the world around them and reach for the best in themselves.

As a Church of England school, we believe the verse that represents what we are aiming to achieve is:

'Encourage one another and build each other up' (Thessalonians 5:11)

It is essential that the school works in partnership with parents and carers, and effective communication between home and school is key. We use Class Dojo as our main form of communication however you can find additional details on the curriculum on our school website.

Thank you for your support and I look forward to seeing your child continue to flourish.

Mrs R. Major

Year 6 Curriculum

DISCOVER TERM (History Focus):

- Significant events that took place throughout the Victorian period; they will explore how industry changed throughout this time and the impact that this had on different groups in Victorian society.
- Crimes and their punishment in the Victorian time and how these changed our modern justice systems.
- Explore Mayan culture and life through an exciting Mayan workshop. They will consider different historical sources, evaluating their usefulness and possible bias
- Comparison between the Mayans to the Anglo-Saxons, looking at the similarities and differences between the two societies, focusing on leadership and culture.

EXPLORE TERM (Geography Focus):

- Develop their Geography skills including the use of maps and atlas's.
- Longitude and latitude of different countries and how the position affects the seasons in these places. They will look at time zones and explain how the different time zones are affected around the world.
- Continuing our Geography focus, children will apply their knowledge to explore different biomes around the world and the animals that live in these different biomes.
- Comparison of animals of the arctic tundra to others, looking at how animals have adapted to live in these environments, considering adaptations and the work of Charles Darwin.

CREATE TERM (Art Focus):

- The children will explore whether art is a mirror of society. We explore Surrealism, including the artist Salvador Dali and Mexican painter Frida Kahlo. We also investigate the graffiti artist Banksy and how prejudices can be challenged through art.
- In science we study the main parts of the circulatory system and their specific functions. For computing we look at coding to develop a computer game and found out about online safety.
- To round off the year, we will have our residential where we will visit the Peak District, staying at YHA Ravenstor and getting the opportunity for adventurous activities.

English Writing:

- The invention of Hugo Cabret- biography
- The Arrival-extended narrative
- Windrush Child – persuasion history
- Can We Save the Tiger-Discussion
- Resist- history
- The Three Little Pig Project- Letters
- Grimm Fairytales- traditional tales
- The Wind in the Wall gothic narrative
- Night mail poetry

Maths:

- Four operations (+/-/x/÷)
- Order of operations (BODMAS)
- Fractions: add/subtract/divide/multiply
- Convert between decimals, percentages & fractions
- Ratios
- Algebra
- Statistics
- Area, perimeter, volume
- Shape
- Position and Direction

Books we will read:

- Street Child by Berlie Doherty
- Holes by Louis Sachar
- Darwin's Dragon
- Crater Lake

Sport/PE we will play:

- Rugby
- Hockey
- Gymnastics
- Dance
- Circuit Training
- OAA

Music we will hear:

- Happy by Pharrell Williams
- Classroom Jazz
- A New Year Carol by Benjamin Britten
- You've got a friend in me by Carole King

Projects we will create:

- A Victorian Museum open to families
- Quiche (D&T project)
- Electrical Board Game
- Enterprise Project



Coddington

— C of E —
Primary and Nursery
School

PSHE topics:

- Global citizen
- Bullies and power struggles
- Personal goals
- Drugs & exploitation
- Emotional well-being
- Love and loss
- Online safety
- Puberty
- Babies: conception to birth
- Boyfriends / Girlfriends

French:

- Revisiting me/Telling the time/Everyday life
- Homes and houses
- Playing and enjoying sport
- Café culture

RE:

- Religion, worldviews, family and community
- Understanding Christianity Incarnation
- Teachings Wisdom and Authority
- Understanding Christianity Salvation 2B.7
- Beliefs in action in the world

Computing:

- Blogging
- E-Safety
- Coding
- Digital Art

Calendar of Events

September	Year 6 open evening & meet the teacher – Thursday 5 th Democracy Day – Friday 13 th School Photos – Wednesday 18 th NSPCC Workshop – Monday 30 th
October	Harvest Festival 10 th Parents' Evening – Tuesday 8 th & Thursday 10 th Neon Theme Disco – Friday 18 th
November	Welcome to our Victorian Museum – Tuesday 5 th Discover the Mayan Day – TBC Children in Need – Friday 15 th Discover Whole School Day (focus on WW2) Friday 8 th
December	Christmas Fayre – Friday 6 th (5:30 -7:30) Christmas Dinner and Christmas Jumper– Friday 13 th Trip to Newark Palace Theatre to watch Aladdin – Thursday 12 th Christmas Party Day Thursday 19 th INSET – Friday 20 th Christmas Church Service TBC
January	
February	Explore Day (Focus on Africa) – Tuesday 11 th Spring Disco – Thursday 13 th INSET – Friday 14 th
March	World Book Day – Wednesday 5 th – Fancy dress as book character/pyjamas. Science Day – Thursday 13 th Red Nose Day Friday 21 st Parents Evening – 25 th and 27 th PTA Golden Ticket Chocolate Bar Sale TBC Mothering's Sunday Pop Up Shop TBC
April	
May	SATs week – Monday 12 th to Thursday 15 th School photos – Monday 19 th Create Day (Focus on the Purpose of Art)– Friday 16 th Sponsored Colour Run TBC
June	INSET 2 nd Music Create Day 5 th Year 6 residential – Monday 16 th to 19 th June Sports Day -Thursday 26 th am Father's Day Pop Up Shop TBC
July	Year 6 performance 15 th and 17 th July Reports – Friday 18 th Bounce About and Leaver's Party – Tuesday 22 nd Year 6 Leavers Service – Friday (am) 25 th

Trips and Event Costings

<i>Date</i>	<i>Trip/ Event</i>	<i>Cost</i>	<i>Payment Due</i>
5 th November	Victorian Museum	None	
16 November	Maya Workshop	£9.65 approx	10 th November
20 th October	School Disco (optional)	£3	6 th Oct
14 th December	Trip to Newark Palace Theatre to watch the pantomime	£14.50	6 th Oct
9 th February	School Disco (optional)	£3	26 th Jan
-	Leavers Hoodies	Approx. £30	Spring term -
5 th June	Drumming workshop	Approx £2.50	
16 th -19 th June	Residential	£300	15 th March
July	Y6 Emergency Services Day	None	
22 nd July	Bounce About & Leavers Party	TBC – last year £10	

*All costs and dates are correct at the time of printing.

Parent Pay

We are a cashless school and collect all payments for trips and events through a website called ParentPay.

The school office will provide you with login details and as a family you will be able to manage the payments.

If you are in receipt of free school meals, please contact the office for reduced amounts or flexible payment options.

If you are not in receipt of free school meals but will struggle to fund these activities, please do so or talk to Mrs Hanstock who will be able to sign post support such as the Coddington Trust Fund. We do not want money to ever be a barrier to children having these experiences so please reach out to us if you have concerns.

General Information

Uniform

Our uniform is:

- Burgundy jumper or cardigan
- Pale blue polo shirt
- Dark grey trousers, dress, or skirt. (In summer this can be substituted for shorts or a pale blue summer dress)
- Plain black shoes (not trainers)
- Children may wear single studs in their ears, but we ask that children do not wear any other jewellery.
- Children should not wear make up or fake nails.



PE uniform

- Black hooded top, plain pale blue t-shirt, black tracksuit trousers or shorts. No logos.
- Trainers

Please note, it is not compulsory for children to have the school logo on their clothes.

School Meals

We can provide a fresh, healthy meal cooked on the school site daily.

Families can decide daily if they would like their child to have:

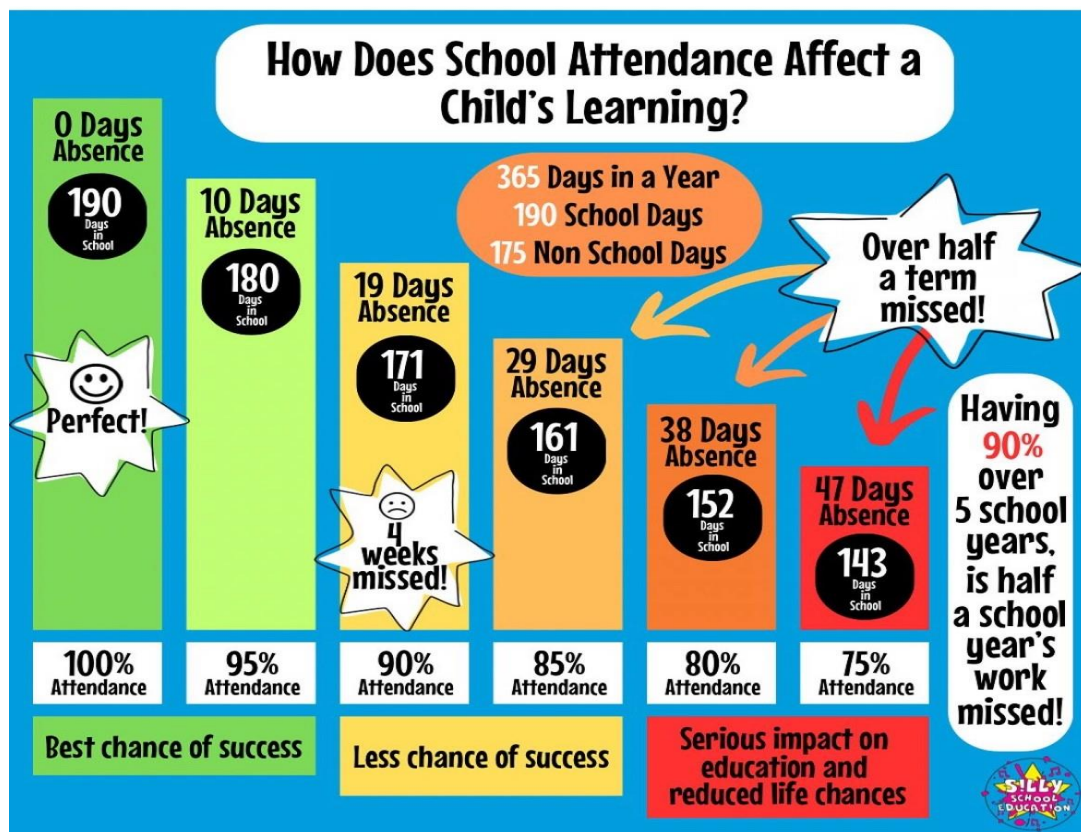
- A hot dinner, a three-week menu is provided on the website
- A cold meal, either cheese, ham or tuna mayonnaise sandwich
- A panini, either cheese or ham
- A jacket potato with cheese, cheese and beans or tuna mayonnaise

Children may decide to bring a healthy packed lunch instead (no hot food please).

Whilst the register is being taken in the morning the children will be asked what they are having for lunch. There is no need to pre-order.

School lunches are £2.95 a day and payments are added to ParentPay. Foundation, Year 1 and Year 2 children are eligible for universal free school meals and therefore there is no cost for these year groups.

Attendance



We know that sometimes our pupils cannot come to school because they are really unwell - and that's the right thing to do for them and other pupils. Medical advice is clear however that children with mild illness will often be well enough to attend - for example if they have a cough, or cold, without a temperature. The NHS also states that children who are taking antibiotics can still attend school. The NHS guidance 'Is my child too ill for school?' - NHS (www.nhs.uk) is designed to support parents in their decision making about mild illness.

We also know that pupils fall behind their friends and classmates when they miss school. We want the amount of missed education to be reduced as much as possible.

We believe that our community is stronger together, with all our pupils in school, on time, every day.

We are building life skills, life-long friendships and preparing your child for future success – we can only do this, if they are in school.

How to help your child

The best way to support your child's learning is for your child to attend school daily, on time and ready to learn!

Other ways you could support your child's learning are listed below:

Maths

- TTRS – Practice those times tables
- Top Marks
- BBC Bitesize

Reading

- Read daily.
- Read to your children and discuss what you have read.
- Let your children see you reading!
- Visit the library.
-

Spelling

- Spelling Shed
- Practice one or two words a day
- Show them how to use a dictionary – don't rely on spell check

Topic /other

- Ask your children about what they are learning
- Question them about previous learning
- Talk about daily events (watch Newsround)
- Go to the library/other places linked to the topic

Signposting

Safeguarding: If you have a safeguarding concern, please consider if you need to contact the police or MASH (0300 500 80 90) first. If you do need contact the school, please email safeguarding@coddington.notts.sch.uk

Family Engagement Officer: Mrs Hanstock works closely with school staff, local community services, preventative services, and social services to ensure that the needs of the children are being met. She also supports children's pastoral needs including emotional, social, welfare, care and health.
Tel: 01636 702974 Email: n.hanstock@coddington.notts.sch.uk

Pupil Premium: Mrs Penn is our Pupil Champion and leads on the funding and support for Pupil Premium, Looked After Children and Post Looked After Children.
Tel: 01636 702974 Email: l.penn@coddington.notts.sch.uk

SENDCo: Mrs Mercer is our Special Educational Needs and Disability Co-ordinator and leads on the funding and support for SEND and EAL children.
Tel: 01636 702974 Email: c.mercer@coddington.notts.sch.uk

Speech and Language: Mrs Connor leads on Speech and Language across the school. If you are concerned about your child's speech, please contact Mrs Connor or your class teacher.
Tel: 01636 702974 Email: r.connor@coddington.notts.sch.uk

Ask Us Notts: local information and advice for Nottinghamshire residents. www.askusnotts.org.uk

Food Bank: Collingham Food Pantry deliver food to the school collinghamfoodbank@gmail.com

Home-Start Newark:

Home-Start Newark helps families with young children deal with whatever life throws at them. They support parents as they learn to cope, improve their confidence and build better lives for their children. www.homestartnewark.co.uk

Mind:

For free mental health and advice. Tel: 0300 123 3393

Newark Women's Aid:

Newark Women's Aid is an independent, local charity providing specialist services to support women with or without children who have experienced physical, sexual, emotional, psychological, or economic abuse.

Phone: 01636 679687 Email: newarkwomensaid@btconnect.com



Coddington

C of E
Primary and Nursery
School

School Calendar

2024-2025

Term dates for pupils

Autumn term 2024

School opens – Tuesday 3 September 2024
 Half term – Monday 21 October 2024 to Friday 1 November 2024.

School closes for Christmas – evening Thursday 19 December 2024.

Spring term 2025

School opens – Monday 6 January 2025
 Half term – Monday 17 February 2025 to Friday 21 February 2025.

School closes for Easter – evening Friday 4 April 2025.

Summer term 2025

School opens – Monday 22 April 2025
 Half term – Monday 26 May 2025 to Friday 30 May 2025.

School Closes for the summer – evening Friday 25 July 2025.

SEPTEMBER							OCTOBER							NOVEMBER						
M	T	W	T	F	S	S	M	T	W	T	F	S	S	M	T	W	T	F	S	S
2	3	4	5	6	7	8	1	2	3	4	5	6	1	2	3					
9	10	11	12	13	14	15	7	8	9	10	11	12	13	4	5	6	7	8	9	10
16	17	18	19	20	21	22	14	15	16	17	18	19	20	11	12	13	14	15	16	17
23	24	25	26	27	28	29	21	22	23	24	25	26	27	18	19	20	21	22	23	24
30							28	29	30	31	25	26	27	28	29	30				

DECEMBER							JANUARY							FEBRUARY						
M	T	W	T	F	S	S	M	T	W	T	F	S	S	M	T	W	T	F	S	S
					1	1	2	3	4	5	3	4	5	6	7	8	9			
2	3	4	5	6	7	8	6	7	8	9	10	11	12	10	11	12	13	14	15	16
9	10	11	12	13	14	15	13	14	15	16	17	18	19	17	18	19	20	21	22	23
16	17	18	19	20	21	22	20	21	22	23	24	25	26	24	25	26	27	28		
23	24	25	26	27	27	28	29	30	31											

MARCH							APRIL							MAY						
M	T	W	T	F	S	S	M	T	W	T	F	S	S	M	T	W	T	F	S	S
					1	2	1	2	3	4	5	6	1	2	3	4				
3	4	5	6	7	8	9	7	8	9	10	11	12	13	5	6	7	8	9	10	11
10	11	12	13	14	15	16	14	15	16	17	18	19	20	12	13	14	15	16	17	18
17	18	19	20	21	22	23	21	22	23	24	25	26	27	19	20	21	22	23	24	26
24	25	26	27	28	29	30	28	29	30	31	26	27	28	29	30	31				

JUNE							JULY							AUGUST						
M	T	W	T	F	S	S	M	T	W	T	F	S	S	M	T	W	T	F	S	S
					1	1	2	3	4	5	6	1	2	3						
2	3	4	5	6	7	8	7	8	9	10	11	12	13	4	5	6	7	8	9	10
9	10	11	12	13	14	15	14	15	16	17	18	19	20	11	12	13	14	15	16	17
16	17	18	19	20	21	22	21	22	23	24	25	26	27	18	19	20	21	22	23	24
23	24	25	26	27	28	29	28	29	30	31	25	26	27	28	29	30	31			

Administration Day

Public Holidays

School Holidays