



Coddington

— C of E —

Primary and Nursery
School

Welcome to Year 5

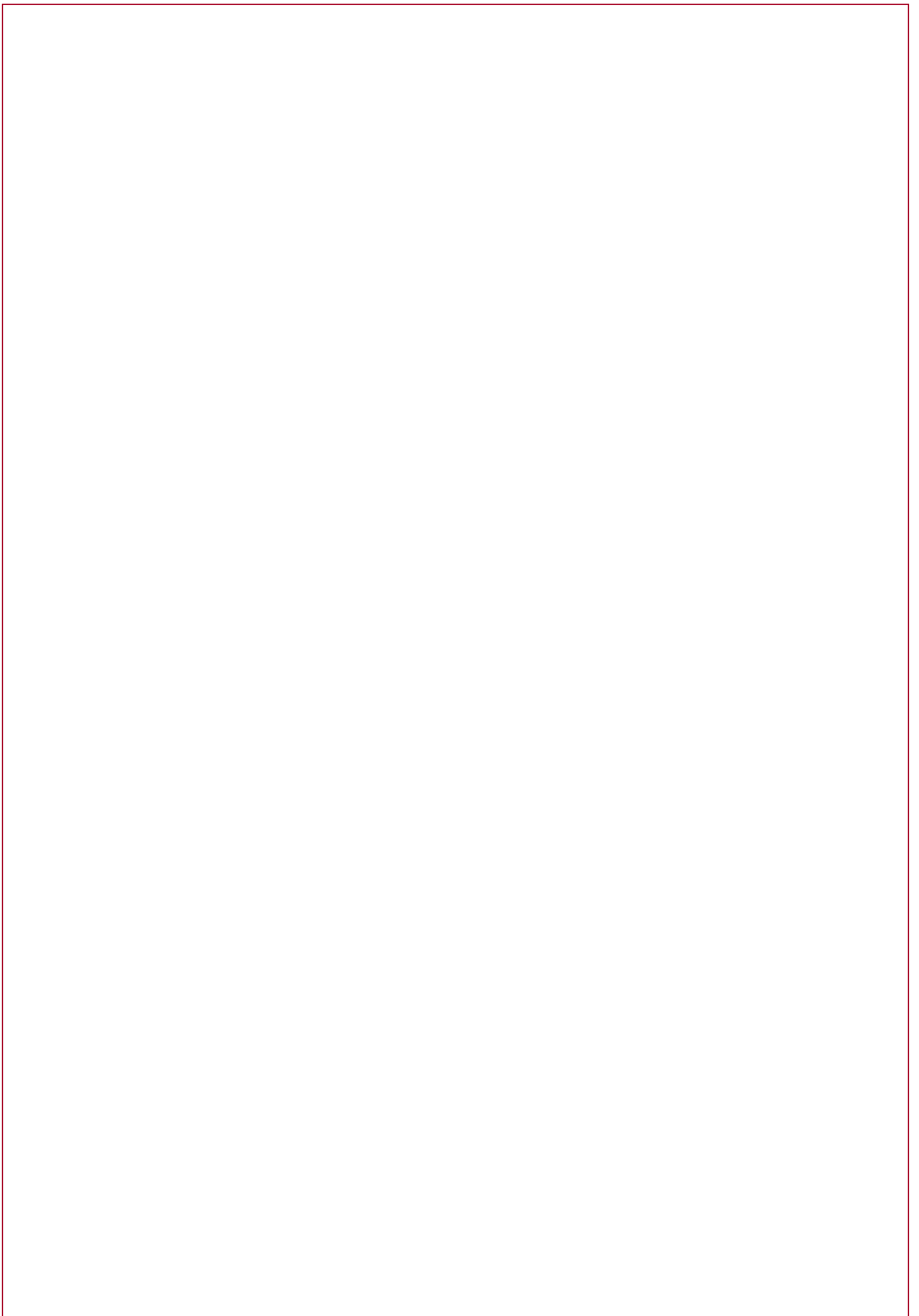
2024 - 2025

Teaching Team:

Mr Christopher, Mrs Wharam-Lewis (Mrs W.)

Mrs Plowman (HLTA & PPA cover), Miss Bird (TA) Mrs Hey (TA)

Mr West (Sports Coach)



Welcome from the Headteacher

I am delighted to introduce you to your child's next year of learning. This booklet aims to provide you with an overview of the broad curriculum your child will engage with over the coming academic year. It also details the enrichment opportunities teachers have planned to enhance the children's knowledge, skills and experience.

It is important to me that our school develops the whole child, and I am committed to creating a positive and nurturing environment where all children can explore, learn and grow, both personally and academically.

Our school vision is:

We value each child for who they are and prepare them for who they can become.

Our school values are:

Care, Community and Courage

As a school, we recognise that everyone matters, we are all neighbours, and we must act with both compassion and bravery. We want children to be inquisitive of the world around them and reach for the best in themselves.

As a Church of England school, we believe the verse that represents what we are aiming to achieve is:

'Encourage one another and build each other up' (Thessalonians 5:11)

It is essential that the school works in partnership with parents and carers, and effective communication between home and school is key. We use Class Dojo as our main form of communication however you can find additional details on the curriculum on our school website.

Thank you for your support and I look forward to seeing your child continue to flourish.

Mrs R. Major

Year 5 Curriculum

DISCOVER TERM (History Focus):

During the Ancient Egyptians we: Explore their chronological position in world history, periods in history that overlap and occur concurrently. Explore how they were one of the earliest civilisations and what their achievements were. The River Nile and its importance to building a civilisation. Pyramids, hieroglyphics, the mummification process, and the afterlife. The solar calendar and the Gods.

During our study of The English Civil War we: Learn about the chronological position of The Stuarts and causes of the war; that significant events in the Civil War happened in our local area. Compare Charles I and Oliver Cromwell and how their difficulties shaped the modern world, closely analysing the different accounts and why they were different.

EXPLORE TERM (Geography Focus):

Using mapping and research skills to explore Great Hucklow and its surrounding area, children know that:

- There are symbols and keys on an Ordnance Survey map
- Know that 6-figure grid references are used to pinpoint locations

There are human and physical characteristics around Great Hucklow, and children can identify them

Using atlases, digital maps and research, children know that:

- Natural resources produce energy
- There are countries and cities in South America
- There are geographical similarities and differences between regions in South America

CREATE TERM

By the end of our create topic we should:

Know that colours, tones and tints can enhance the mood of a piece.

Know that the styles of other artists can influence their own work.

Know how to develop close observation skills using a variety of view finders.

Know how to show life like qualities and real-life proportions.

Know that design criteria can be developed.

Know that appropriate tools / materials are used with precision.

Know that the purpose and appearance of a product can be evaluated.

English Writing:

Poetry
Mythical narrative
Science-fiction narrative
Epic adventure story
Character perspectives
Fairytale reworking
Biography
Explanations
Newspaper articles
Non-chronological report

Maths:

- Place Value
- Four operations (+/-/x/÷)
- Fractions: add/subtract/multiply
- Decimals/negative numbers
- Convert between decimals, percentages & fractions
- Ratios
- Statistics
- Area, perimeter, volume
- Shape
- Position and Direction

Books we will read:

- The Land of Roar
- October, October
- The boy in the tower
- Percy Jackson
- Robot Girl
- Odyssey
- The Island
- The sleeper and the spindle
- The Lizzie & Belle Mysteries
- Curiosity
- Kaspar, Prince of cats
- Children of the Benin Kingdom

Sport/PE we will play:

- Rugby
- Hockey
- Gymnastics
- Dance
- Team Games
- Athletics

Music we will hear:

- Living on a Prayer-Bon Jovi
- Classroom Jazz
- The Fresh Prince of Bel-Air
- Dancing in the Street

Projects we will create:

- Making Pizza (D&T project)
- Reading Cushions (D&T project)
- Design and make a moving toy.



Coddington

— C of E —
Primary and Nursery
School

PSHE topics:

- Rights and responsibilities
- Being a citizen
- Racism
- Types of Bullying
- Jobs and careers
- Effects of Smoking and alcohol
- Body Image
- Self-recognition and self-worth
- Puberty
- Conception

French:

- Healthy Eating (going to the market)
- Clothes
- Going to the seaside

R.E:

- Inspirational People in today's World
- Was Jesus the Messiah?
- Religion and the individual: what matters to Christians?
- Beliefs in action in the world
- What does it mean if God is holy and loving?

Computing:

- Sequencing and logical reasoning
- Select, use and combine Computer networks
- Personal information
- Staying safe
- Digital citizenship

Calendar of Events

September	School INSET day 2 nd September Thursday 26 th September, 3.15pm One to one drop in for parents Democracy day – Friday 13 th School photos – Wednesday 18 th
October	Great Hucklow Residential Wednesday 2 nd - Friday 4 th October Harvest festival – Thursday 10 th (visit All Saints Church) Parents' Evening – 8 th and 10 th Disco – Friday 18 th Neon themed disco (optional)
November	Discover Whole School Day Friday 8 th Children in Need 15 th (non-uniform day)
December	Christmas Fair – Friday 6 th , 5.30-7.30pm Christmas Church Service TBC Trip to Newark Palace Theatre to watch Snow White – Thursday 12 th Christmas Jumper Day – Friday 13 th Christmas Dinner Day Christmas Party (in class) – Wed 18 th INSET DAY Friday 20 th December
February	Explore Day (Focus on Africa) – Tuesday 11 th Thursday 13 th February: Ancient Egyptian Day Spring Disco Rock Star themed– Thursday 13 th February INSET Friday 14 th
March	Newark Civil War Centre Monday 3 rd March Date TBC World Book Day – Wednesday 5 th – Either fancy dress as a book character or PJ's. Golden ticket chocolate bar sale: TBC Mothering Sunday pop up shop. Science Day Thursday 13 th March Red Nose Day Friday 21 st Break the rules day-details to follow. Parents Evening – 25 th and 27 th
April	Easter Church service TBC. Planetarium Visit Thursday 24 th April Bike ability 24 th and 25 th April TBC
May	Create Day Friday 16 th May School photos – Monday 19 th Wednesday 21 st May Year 5 performance Thursday 22 nd May Year 5 performance Friday 23 rd School Disco
June	Monday 2 nd June INSET day Music Day Thursday 5 th June Ducklings Monday 9 th June Date TBC Sports Day – Thursday June 26 th
July	New Class Details Friday 11 th Transition Day – Wednesday 16 th Reports – Friday 18 th Bounce About – Tuesday 22 nd

Trips and Event Costings

<i>Date</i>	<i>Trip/ Event</i>	<i>Cost</i>	<i>Payment Due</i>
2nd-4th October	Great Hucklow Residential	£204.15	2nd September
20 th October	School Disco (optional)	£3	19 th September
12 th December	Trip to Newark Palace Theatre to watch the pantomime	£16	6 th Oct
13 th February	Ancient Egyptian Day	Free – Make your own costumes at home!	N/A
13 th February	School Disco (optional)	£3	12 th February
3 rd March	Newark Civil War Centre	£15	24 th February
21 st and 22 nd May	Y5 Production	Costumes	
24 th April	Planetarium	£7	7 th April
9 th June	Ducklings	£8	9 th June
22 nd July	Drumming workshop	£2.50	21 st July
25 th July	Bounce About	£3.50	24 th July

*All costs and dates are correct at the time of printing.

Parent Pay

We are a cashless school and collect all payments for trips and events through a website called ParentPay.

The school office will provide you with login details and as a family you will be able to manage the payments.

If you are in receipt of free school meals, please contact the office for reduced amounts or flexible payment options. If you are not in receipt of free school meals but will struggle to fund these activities, please talk to the office or you may want to consider contacting Coddington Trust Fund who support local families.

General Information

Uniform

Our uniform is:

- Burgundy jumper or cardigan
- Pale blue polo shirt
- Dark grey trousers, dress or skirt. (In summer this can be substituted for shorts or a pale blue summer dress)
- Plain black shoes (not trainers)
- Children may wear single studs in their ears but we ask that children do not wear any other jewellery



PE uniform

- Black hooded top, Pale blue t-shirt, Black tracksuit trousers or shorts
- Trainers

Please note, it is not compulsory for children to have the school logo on their clothes.

School Meals

We provide a fresh healthy nutritious meal cooked from scratch every day using locally sourced produce from our award-winning suppliers.

Families can decide daily if they would like their child to have:

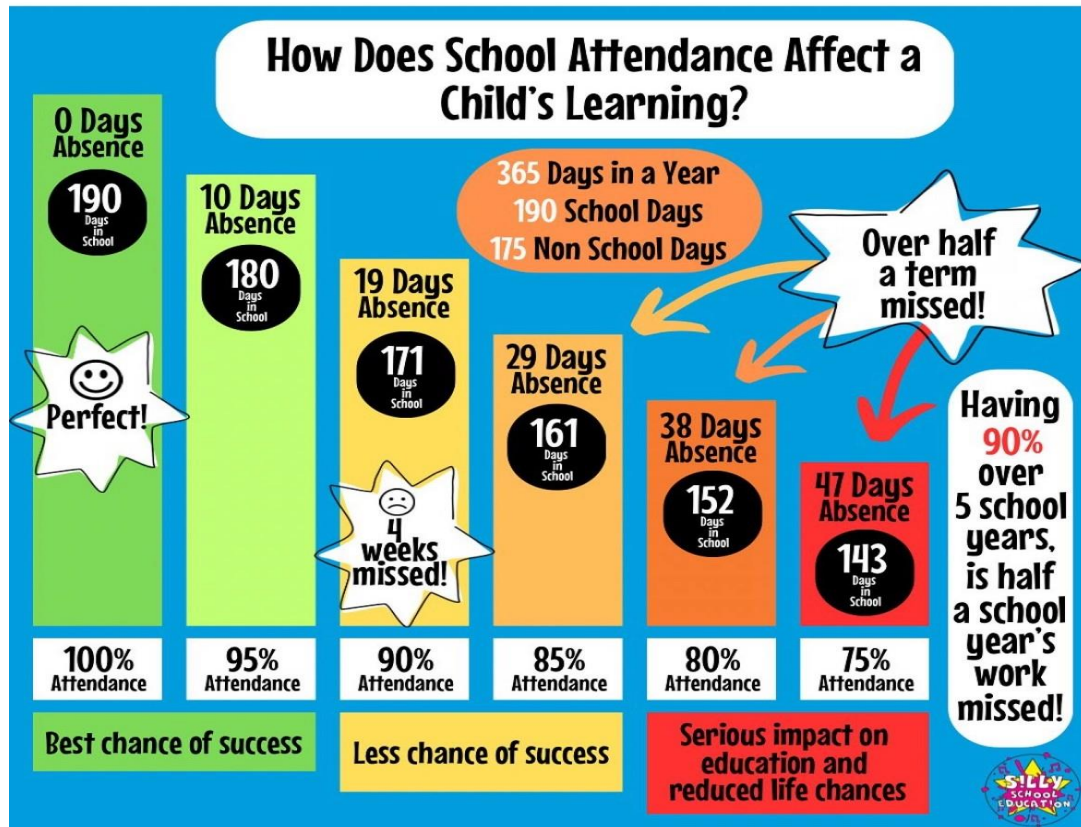
- A hot dinner, a three-week menu is provided on the website
- A cold meal, either cheese, ham or tuna mayonnaise sandwich
- A panini, either cheese or ham
- A jacket potato with cheese, cheese and beans or tuna mayonnaise

Children can also bring in a healthy packed lunch (no hot food please).

Whilst the register is being taken in the morning the children will be asked what they are having for lunch. There is no need to pre-order.

Payments will be added to ParentPay (£2.95), except for Reception, Year 1 and Year 2 children who are eligible for universal free school meals.

Attendance



We know that sometimes our pupils cannot come to school because they are really unwell - and that's the right thing to do for them and other pupils. Medical advice is clear however that children with mild illness will often be well enough to attend - for example if they have a cough, or cold, without a temperature. The NHS also states that children who are taking antibiotics can still attend school. The NHS guidance 'Is my child too ill for school?' - NHS (www.nhs.uk) is designed to support parents in their decision making about mild illness.

We also know that pupils fall behind their friends and classmates when they miss school. We want the amount of missed education to be reduced as much as possible.

We believe that our community is stronger together, with all our pupils in school, on time, every day.

We are building life skills, life-long friendships and preparing your child for future success – we can only do this, if they are in school.

How to help your child

The best way to support your child's learning is for your child to attend school daily, on time and ready to learn!

Other ways you could support your child's learning are listed below:

Maths

- TT Rockstars
- Practice calculations at home.
- Telling the time
- Paying with money at shops
- Helping with homework

Reading

- Weekly/Daily reading of reading book
- Discussion and understanding
- Sharing vocabulary
- Making predictions
- Summarising

Spelling

- Sharing spelling rules at home
- Practicing Y5 common exception words
- Using dictionaries/thesaurus

Topic /other

- Making costume during Ancient Egyptian day
- Visit the library.
- Visit local museums.
- Walk civil war trail.

Signposting

Safeguarding: If you have a safeguarding concern, please consider if you need to contact the police or MASH (0300 500 80 90) . If you need to contact school, please e-mail safeguarding@coddington.notts.sch.uk.

Family Engagement Officer: Mrs Hanstock works closely with school staff, local community services, preventative services, and social services to ensure that the needs of the children are being met. She also supports children's pastoral needs including emotional, social, welfare, care and health.
Tel: 01636 702974 Email: n.hanstock@coddington.notts.sch.uk

Pupil Premium Lead: Mrs Penn is our Pupil Premium Champion and leads on the funding and support for Pupil Premium, Looked After Children and Post Looked After Children.
Tel: 01636 702974 Email: l.penn@coddington.notts.sch.uk

SENDCo: Mrs Mercer is our Special Educational Needs and Disability Co-ordinator and leads on the funding and support for SEND and EAL children.
Tel: 01636 702974 Email: c.mercer@coddington.notts.sch.uk

Speech and Language Lead: Mrs Connor leads on SALT across the school. If you are concerned about your child's speech, please contact Mrs Connor or your class teacher.
Tel: 01636 702974 Email: r.connor@coddington.notts.sch.uk

Governors: Sarah Evans is our Chair of Governors. If you need to contact the Governors for any reason (other than can be dealt reasonably by the Head Teacher).
Email: governor@coddington.notts.sch.uk

Friends of Coddington School: This is our PTA group. If you would like to get involved, please contact the chair, Natalie Henstock Email: friendsofcoddington@outlook.com

Ask Us Notts: local information and advice for Nottinghamshire residents. www.askusnotts.org.uk

Food Bank: Collingham Food Pantry collinghamfoodbank@gmail.com

Home-Start Newark: Home-Start Newark helps families with young children deal with whatever life throws at them. They support parents as they learn to cope, improve their confidence and build better lives for their children. www.homestartnewark.co.uk

Mind: For free mental health and advice. Tel: 0300 123 3393

Newark Women's Aid: Newark Women's Aid is an independent, local charity providing specialist services to support women with or without children who have experienced physical, sexual, emotional, psychological, or economic abuse.
Phone: 01636 679687 Email: newarkwomensaid@btconnect.com



Coddington
— C of E —
Primary and Nursery
School

2024-2025

School Calendar

SEPTEMBER	OCTOBER	NOVEMBER
M T W T F S S 2 3 4 5 6 7 8 9 10 11 12 13 14 15 16 17 18 19 20 21 22 23 24 25 26 27 28 29 30	M T W T F S S 1 2 3 4 5 6 7 8 9 10 11 12 13 14 15 16 17 18 19 20 21 22 23 24 25 26 27 28 29 30 31	M T W T F S S 1 2 3 4 5 6 7 8 9 10 11 12 13 14 15 16 17 18 19 20 21 22 23 24 25 26 27 28 29 30
DECEMBER	JANUARY	FEBRUARY
M T W T F S S 2 3 4 5 6 7 8 9 10 11 12 13 14 15 16 17 18 19 20 21 22 23 24 25 26 27 28 29 30	M T W T F S S 1 2 3 4 5 6 7 8 9 10 11 12 13 14 15 16 17 18 19 20 21 22 23 24 25 26 27 28 29 30 31	M T W T F S S 3 4 5 6 7 8 9 10 11 12 13 14 15 16 17 18 19 20 21 22 23 24 25 26 27 28
MARCH	APRIL	MAY
M T W T F S S 3 4 5 6 7 8 9 10 11 12 13 14 15 16 17 18 19 20 21 22 23 24 25 26 27 28 29 30 31	M T W T F S S 1 2 3 4 5 6 7 8 9 10 11 12 13 14 15 16 17 18 19 20 21 22 23 24 25 26 27 28 29 30 31	M T W T F S S 5 6 7 8 9 10 11 12 13 14 15 16 17 18 19 20 21 22 23 24 26 26 27 28 29 30 31
JUNE	JULY	AUGUST
M T W T F S S 2 3 4 5 6 7 8 9 10 11 12 13 14 15 16 17 18 19 20 21 22 23 24 25 26 27 28 29 30	M T W T F S S 1 2 3 4 5 6 7 8 9 10 11 12 13 14 15 16 17 18 19 20 21 22 23 24 25 26 27 28 29 30 31	M T W T F S S 1 2 3 4 5 6 7 8 9 10 11 12 13 14 15 16 17 18 19 20 21 22 23 24 25 26 27 28 29 30 31

Term dates for pupils

Autumn term 2024

School opens – Tuesday 3 September 2024
Half term - Monday 21 October 2024 to Friday 1 November 2024.

School closes for Christmas – evening Thursday 19 December 2024.

Spring term 2025

School opens – Monday 6 January 2025
Half term - Monday 17 February 2025 to Friday 21 February 2025.

School closes for Easter – evening Friday 4 April 2025.

Summer term 2025

School opens - Monday 22 April 2025
Half term – Monday 26 May 2025 to Friday 30 May 2025.

School Closes for the summer – evening Friday 25 July 2025.

 School Holidays

 Public Holidays

 Administration Day