



**Coddington**

— C of E —

Primary and Nursery  
School

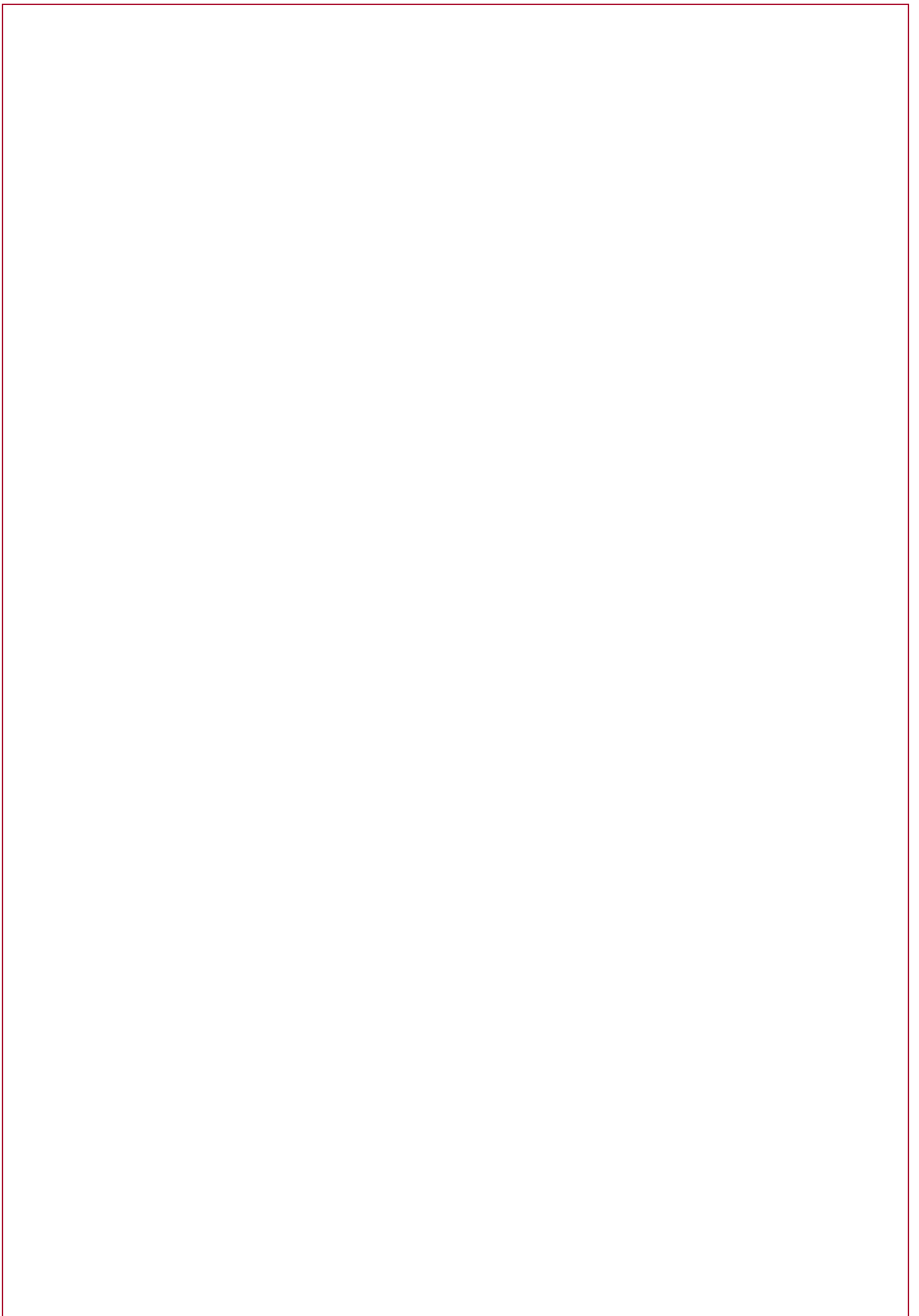
# **Welcome to Year 4**

## **2024 - 2025**

### **Teaching Team:**

Mr Lewis, Mrs Evans and Mrs Bollington

Mrs McDavid (TA and PPA cover), Mr West (Sports Coach)



# Welcome from the Headteacher

*I am delighted to introduce you to your child's next year of learning. This booklet aims to provide you with an overview of the broad curriculum your child will engage with over the coming academic year. It also details the enrichment opportunities teachers have planned to enhance the children's knowledge, skills and experience.*

*It is important to me that our school develops the whole child, and I am committed to creating a positive and nurturing environment where all children can explore, learn and grow, both personally and academically.*

*Our school vision is:*

***We value each child for who they are and prepare them for who they can become.***

*Our school values are:*

***Care, Community and Courage***

*As a school, we recognise that everyone matters, we are all neighbours, and we must act with both compassion and bravery. We want children to be inquisitive of the world around them and reach for the best in themselves.*

*As a Church of England school, we believe the verse that represents what we are aiming to achieve is:*

***'Encourage one another and build each other up' (Thessalonians 5:11)***

*It is essential that the school works in partnership with parents and carers, and effective communication between home and school is key. We use Class Dojo as our main form of communication however you can find additional details on the curriculum on our school website.*

*Thank you for your support and I look forward to seeing your child continue to flourish.*

*Mrs R. Major*

# Year 4 Curriculum

## **DISCOVER TERM (History Focus):**

The children will:

- Compare Britain before and after the arrival of the Roman Invaders, what changes happened and what stayed the same. Consider the questions: What is the impact of the Roman Empire on people's lives? How do we know about the Romans – looking at primary and secondary evidence.
- Take part in an Archaeology afternoon exploring real Roman artefacts.
- Focus on changes over time, looking at new Invaders and their impact.
- Explore similarities and differences between one historical period and another.
- The children will also experience Viking Activity Day .

## **EXPLORE TERM (Geography Focus):**

The children will:

- Explore atlases, maps and globes to discover about two countries less familiar to us – USA and Costa Rica.
- Research similarities and differences between different climatic and demographic areas.
- Explore coordinates and grid references and points of the compass.
- Research different landmarks in the USA.
- Study rivers, the water cycle and settlements/land uses.
- Consider the importance of rivers and the features of river systems, from their source to the sea.

## **CREATE TERM (Art Focus):**

The children will:

- Explore the colour wheel; primary, secondary and tertiary colours.
- Develop an understanding of tints, shades and the correct use of hue.
- Experiment with different painting techniques i.e., brushstrokes, printing, washes and mixed media.
- Our chosen artist to study in depth this half term is David Hockney and his portrayal of landscape using different media including IT.
- We will be presenting our Artwork in an Art exhibition in our classrooms for the rest of school to see!

## **English Writing:**

Jaberwocky - Performance poetry, character description

Until I Met Dudley - Formal and informal Writing, explanations, letters

Frindeswydles -Narrative sequels, dialogue, speeches

Odd and the Frost Giants – Recounts, setting description

Varmints-Diary entries, Instructions, story writing

Westlandia - Retellings - alternative perspective, narrative recounts, character and setting descriptions, letters, short explanations

The Lion the Witch and the Wardrobe- Narrative Text, report writing

## **Maths:**

- Place value
- Addition and subtraction
- Measurement
- Area
- Multiplication and division
- Length and perimeter
- Fractions
- Decimals
- Money
- Time
- Shape
- Position and directions

### **Books we will read:**

- Jaberwocky- Lewis Carrol
- Until I Met Dudley - Roger McGough and Chris Riddell
- Varmints – Helen Ward
- Odd and the Frost Giants – Neil Gaiman
- The Lion the Witch and the Wardrobe - C. S. Lewis
- Weslandia – Paul Fleischmann
- Roman Diary- The Journal of Iliona by Richard Platt
- Talk like a River by Jordan Scott
- Barnabus Project by the Fan Brothers
- How to Train your Dragon by Cressida Cowell.
- Dragonology by Dugald Steer
- The Giant's Necklace by Michael Morpurgo
- The Ice Bear by Jackie Morris
- Frindleswyde
- The Lost Words

### **Sport/PE we will explore:**

- Swimming
- Invasion games
- Gymnastics
- Dance
- Outdoor Adventure
- Net and Ball
- Striking and Fielding
- Multi skills
- Athletics

### **Music we will hear:**

- Mamma Mia
- Stop
- Lean on me
- Blackbird

### **PSHE topics:**

- Global citizen
- Working in a team
- Rights, responsibilities, and democracy
- Rewards and consequences
- Judging appearances
- Understanding bullying
- Celebrating differences
- Hopes and dreams
- Overcoming disappointment
- Creating new dreams and achieving goals.
- Healthy friendships
- Smoking
- Alcohol
- Jealousy
- Love and loss
- Memories
- Boyfriends and girlfriends
- Having a baby
- Girls and puberty
- Accepting change



**Coddington**  
— C of E —  
Primary and Nursery  
School

### **Projects we will create:**

- Roman Purse (textiles)
- Cooking linked to North America
- Moving monsters (pneumatics)
- Rocky Road Easter Tray Bake

### **French:**

- Ways to describe people
- Leisure activities and telling the time
- Festivals
- French cities, directions and the weather
- Shopping for food
- Countries who are French speaking

### **Computing:**

- E-Safety
- Coding
- Microsoft Word
- PowerPoint Presentation

### **Homework:**

- Learn times tables /Explore spelling rule / Weekly homework sheet/ Read regularly.

# Calendar of Events

<b>September</b>	Swimming every Friday (beginning Friday 13 <sup>th</sup> ) Democracy Day - Friday 13 <sup>th</sup> Roman Day - Tuesday 17 <sup>th</sup> School Photographs – Wednesday 18 <sup>th</sup>
<b>October</b>	Swimming every Friday Parents' Evening – Tuesday 8 <sup>th</sup> and Thursday 10 <sup>th</sup> Harvest festival – Thursday 10 <sup>th</sup> (All Saints Church) Neon Disco – Friday 18 <sup>th</sup>
<b>November</b>	Swimming every Friday Discover Whole School Day (focus on WW2) - Friday 8 <sup>th</sup> Viking Day – Wednesday 13 <sup>th</sup> Children in Need (non-uniform day) - Friday 15 <sup>th</sup>
<b>December</b>	Swimming every Friday Christmas Fair – Friday 6 <sup>th</sup> (5:30 -7:30) Trip to Newark Palace Theatre to watch Snow White – Thursday 12 <sup>th</sup> Christmas Dinner Day – Friday 13 <sup>th</sup> Christmas Jumper Day – Friday 13 <sup>th</sup> Christmas Church Service - TBC Christmas Party (in class) – Thursday 19 <sup>th</sup> End of Term – Thursday 19 <sup>th</sup> Inset Day - Friday 20 <sup>th</sup>
<b>January</b>	Return to School- Monday 6 <sup>th</sup>
<b>February</b>	Year 4 performance – Monday 10 <sup>th</sup> PM & Wednesday 12 <sup>th</sup> EVE Explore Day (Focus on Africa) – Tuesday 11 <sup>th</sup> Rockstar Disco – Friday 13 <sup>th</sup> Inset Day – Friday 14 <sup>th</sup>
<b>March</b>	World Book Day (Fancy dress as book character or PJ's) - Wednesday 5 <sup>th</sup> Golden Ticket Chocolate Bar Sale – TBC Mothering Sunday Pop Up Sale Bikeability - Monday 10 <sup>th</sup> & Tuesday 11 <sup>th</sup> Science Day – Thursday 13 <sup>th</sup> Red Nose Day (Break the Rules Day!) - Friday 21 <sup>st</sup> Parents Evening – Tuesday 25 <sup>th</sup> and Thursday 27 <sup>th</sup>
<b>April</b>	Y5 Residentail Information - TBC
<b>May</b>	1 night residential (The Deep and Yorkshire Wildlife Park) – 1 <sup>st</sup> & 2 <sup>nd</sup> Sponsored Colour Run - TBC Create Day (Focus on The Purpose of Art) – Friday 16 <sup>th</sup> Class photographs – Monday 19 <sup>th</sup>
<b>June</b>	Inset Day - 2 <sup>nd</sup> Fathers Day Pop Up Sale Create Day - Thursday 5 <sup>th</sup> Y4 Multiplication Checks- 9-13 <sup>th</sup> Hindu Experience- Wednesday 18 <sup>th</sup> Sports Day (KS2 AM, KS1& EYFS PM) – Thursday 26 <sup>th</sup>
<b>July</b>	New class details – Friday 11 <sup>th</sup> Transition Afternoon – Wednesday 16 <sup>th</sup> Reports Out – Friday 18 <sup>th</sup> Bounce About – Tuesday 22 <sup>nd</sup>

# ***Trips and Event Costings***

<i><b>Date</b></i>	<i><b>Trip/ Event</b></i>	<i><b>Approx. Cost</b></i>	<i><b>Payment Due</b></i>
18 <sup>th</sup> October	School Disco (optional)	£3	6 <sup>th</sup> Oct
13 <sup>th</sup> November	Viking Day	£6	6 <sup>th</sup> Oct
12 <sup>th</sup> December	Trip to Newark Palace Theatre to watch the pantomime	£16	6 <sup>th</sup> Oct
9 <sup>th</sup> Feb	School Disco (optional)	£3	22 <sup>nd</sup> Jan
1 <sup>st</sup> -2 <sup>nd</sup> May	The Deep Residential (one night)	£115	1 <sup>st</sup> Apr
5 <sup>th</sup> June	Drumming workshop	£2.50	26 <sup>th</sup> Jun
18 <sup>th</sup> June	Hindu Experience	£6	20 <sup>th</sup> Jun
TBC	Artist Workshop	£2	TBC
22 <sup>nd</sup> July	Bounce About	£3.50	26 <sup>th</sup> April

\*All costs and dates are an estimate and based upon current information.

## **Parent Pay**

We are a cashless school and collect all payments for trips and events through a website called ParentPay.

The school office will provide you with login details and as a family you will be able to manage the payments.

If you are in receipt of free school meals, please contact the office for reduced amounts or flexible payment options. If you are not in receipt of free school meals but will struggle to fund these activities, please talk to the office or you may want to consider contacting Coddington Trust Fund who support local families.

# General Information

## Uniform

Our uniform is

- Burgundy jumper or cardigan
- Pale blue polo shirt
- Dark grey trousers, dress or skirt. (In summer this can be substituted for shorts or a pale blue summer dress)
- Plain black shoes (not trainers)
- Children may wear single studs in their ears, but we ask that children do not wear any other jewellery



PE uniform

- Black hooded top, Pale blue t-shirt, Black tracksuit trousers or shorts
- Trainers

*Please note, it is not compulsory for children to have the school logo on their clothes.*

## School Meals

We provide a fresh healthy nutritious meal cooked from scratch every day using locally sourced produce from our award-winning suppliers.

Families can decide daily if they would like their child to have:

- A hot dinner, a three-week menu is provided on the website
- A cold meal, either cheese, ham or tuna mayonnaise sandwich
- A panini, either cheese or ham
- A jacket potato with cheese, cheese and beans or tuna mayonnaise

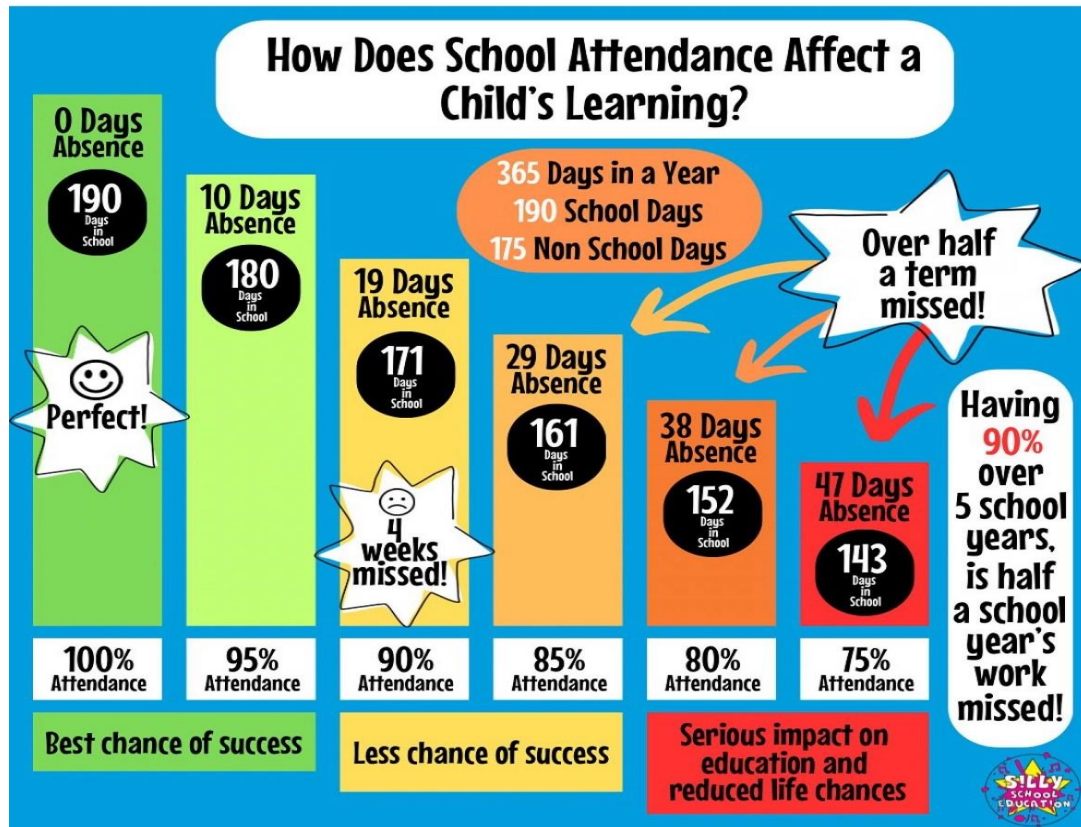
Children can also bring in a healthy packed lunch (no hot food please).

Whilst the register is being taken in the morning the children will be asked what they are having for lunch. There is no need to pre-order.

School meals are £2.95. Payments will be added to ParentPay, except for Reception, Year 1 and Year 2 children who are eligible for universal free school meals.



# Attendance



We know that sometimes our pupils cannot come to school because they are really unwell - and that's the right thing to do for them and other pupils. Medical advice is clear however that children with mild illness will often be well enough to attend - for example if they have a cough, or cold, without a temperature. The NHS also states that children who are taking antibiotics can still attend school. The NHS guidance 'Is my child too ill for school?' - NHS ([www.nhs.uk](http://www.nhs.uk)) is designed to support parents in their decision making about mild illness.

We also know that pupils fall behind their friends and classmates when they miss school. We want the amount of missed education to be reduced as much as possible.

We believe that our community is stronger together, with all our pupils in school, on time, every day.

We are building life skills, life-long friendships and preparing your child for future success – we can only do this, if they are in school.

# *How to help your child*

The best way to support your child's learning is for your child to attend school daily, on time and ready to learn!

Other ways you could support your child's learning are listed below:

## **Maths**

- Regularly use Times Table Rockstars
- Practise times tables on [timestables.co.uk](http://timestables.co.uk)
- Practise time telling on an analogue clock working out duration, start times and end times
- Measuring length, mass and capacity

## **Reading**

- Listening to a story being read to them
- Reading regularly to themselves or another.
- Reading as a family
- Library visits

## **Spelling**

- Explore the spelling rule that has come home. Look for examples and patterns

## **Topic /other**

- Explore BBC bitesize
- Independently tying shoelaces
- Practice telling the time

# Signposting

**Safeguarding:** If you have a safeguarding concern, please consider if you need to contact the police or MASH (0300 500 80 90) first. If you do need to contact the school – please email [safeguarding@coddington.notts.sch.uk](mailto:safeguarding@coddington.notts.sch.uk)

**Family Engagement Officer:** Mrs Hanstock works closely with school staff, local community services, preventative services, and social services to ensure that the needs of the children are being met. She also supports children's pastoral needs including emotional, social, welfare, care and health.  
Tel: 01636 702974      Email: [n.hanstock@coddington.notts.sch.uk](mailto:n.hanstock@coddington.notts.sch.uk)

**Pupil Premium Lead:** Mrs Penn is our Pupil Premium Champion and leads on the funding and support for Pupil Premium, Looked After Children and Post Looked After Children.  
Tel: 01636 702974      Email: [l.penn@coddington.notts.sch.uk](mailto:l.penn@coddington.notts.sch.uk)

**SENDCo:** Mrs Mercer is our Special Educational Needs and Disability Co-ordinator and leads on the funding and support for SEND and EAL children.  
Tel: 01636 702974      Email: [c.mercer@coddington.notts.sch.uk](mailto:c.mercer@coddington.notts.sch.uk)

**Speech and Language Lead:** Mrs Connor leads on SALT across the school. If you are concerned about your child's speech, please contact Mrs Connor or your class teacher.  
Tel: 01636 702974      Email: [r.connor@coddington.notts.sch.uk](mailto:r.connor@coddington.notts.sch.uk)

**Governors:** Sarah Evans is our Chair of Governors. If you need to contact the Governors for any reason (other than can be dealt reasonably by the Head Teacher).  
Email: [governor@coddington.notts.sch.uk](mailto:governor@coddington.notts.sch.uk)

**Friends of Coddington School:** This is our PTA group. If you would like to get involved, please contact the chair, Natalie Henstock Email: [friendsofcoddington@outlook.com](mailto:friendsofcoddington@outlook.com)

**Ask Us Notts:** local information and advice for Nottinghamshire residents. [www.askusnotts.org.uk](http://www.askusnotts.org.uk)

**Food Bank:** Collingham Food Pantry [collinghamfoodbank@gmail.com](mailto:collinghamfoodbank@gmail.com)

**Home-Start Newark:** Home-Start Newark helps families with young children deal with whatever life throws at them. They support parents as they learn to cope, improve their confidence and build better lives for their children. [www.homestartnewark.co.uk](http://www.homestartnewark.co.uk)

**Mind:** For free mental health and advice. Tel: 0300 123 3393

**Newark Women's Aid:** Newark Women's Aid is an independent, local charity providing specialist services to support women with or without children who have experienced physical, sexual, emotional, psychological, or economic abuse.  
Phone: 01636 679687      Email: [newarkwomensaid@btconnect.com](mailto:newarkwomensaid@btconnect.com)

# School Calendar

# 2024-2025



**Coddington**  
— C of E —  
Primary and Nursery  
School

## Term dates for pupils

### Autumn term 2024

School opens – Tuesday 3 September 2024  
Half term - Monday 21 October 2024 to Friday 1 November 2024.

School closes for Christmas – evening Thursday 19 December 2024.

### Spring term 2025

School opens – Monday 6 January 2025  
Half term - Monday 17 February 2025 to Friday 21 February 2025.

School closes for Easter – evening Friday 4 April 2025.

### Summer term 2025

School opens - Monday 22 April 2025  
Half term – Monday 26 May 2025 to Friday 30 May 2025.

School Closes for the summer – evening Friday 25 July 2025.

SEPTEMBER							OCTOBER							NOVEMBER								
M	T	W	T	F	S	S	M	T	W	T	F	S	S	M	T	W	T	F	S	S		
2	3	4	5	6	7	8	1	2	3	4	5	6	1	2	3	4	5	6	7	8	9	10
9	10	11	12	13	14	15	7	8	9	10	11	12	13	11	12	13	14	15	16	17		
16	17	18	19	20	21	22	14	15	16	17	18	19	20	18	19	20	21	22	23	24		
23	24	25	26	27	28	29	21	22	23	24	25	26	27	25	26	27	28	29	30			
30							28	29	30	31												

DECEMBER							JANUARY							FEBRUARY							
M	T	W	T	F	S	S	M	T	W	T	F	S	S	M	T	W	T	F	S	S	
						1	1	2	3	4	5	1	2	3	3	4	5	6	7	8	9
2	3	4	5	6	7	8	6	7	8	9	10	11	12	10	11	12	13	14	15	16	
9	10	11	12	13	14	15	13	14	15	16	17	18	19	17	18	19	20	21	22	23	
16	17	18	19	20	21	22	20	21	22	23	24	25	26	24	25	26	27	28			
23	24	25	26	27	28	29	27	28	29	30	31										

MARCH							APRIL							MAY									
M	T	W	T	F	S	S	M	T	W	T	F	S	S	M	T	W	T	F	S	S			
						1	1	2	3	4	5	6	1	2	3	4	5	6	7	8	9	10	11
3	4	5	6	7	8	9	7	8	9	10	11	12	13	12	13	14	15	16	17	18			
10	11	12	13	14	15	16	14	15	16	17	18	19	20	19	20	21	22	23	24	25			
17	18	19	20	21	22	23	21	22	23	24	25	26	27	26	27	28	29	30	31				
24	25	26	27	28	29	30	28	29	30	31													
31																							

JUNE							JULY							AUGUST									
M	T	W	T	F	S	S	M	T	W	T	F	S	S	M	T	W	T	F	S	S			
						1	1	2	3	4	5	6	1	2	3	4	4	5	6	7	8	9	10
2	3	4	5	6	7	8	7	8	9	10	11	12	13	11	12	13	14	15	16	17			
9	10	11	12	13	14	15	14	15	16	17	18	19	20	18	19	20	21	22	23	24			
16	17	18	19	20	21	22	21	22	23	24	25	26	27	25	26	27	28	29	30	31			
23	24	25	26	27	28	29	28	29	30	31													
30																							

■ Administration Day  
■ Public Holidays  
■ School Holidays