



**Coddington**

— C of E —

Primary and Nursery  
School

# **Welcome to Year 3**

## **2024 - 2025**

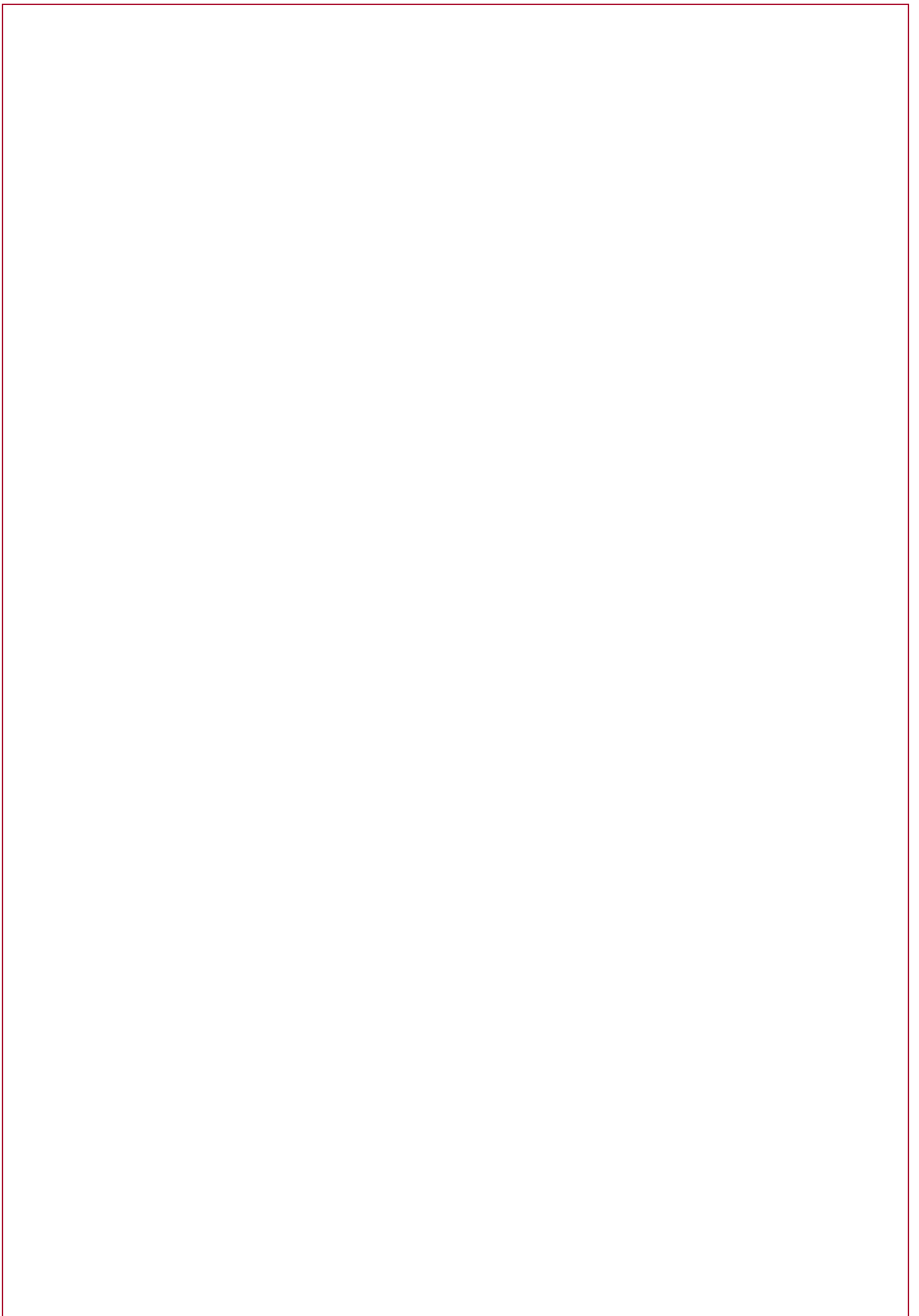
### **Teaching Team:**

Miss Lovett & Miss Hall

Mrs Cox & Miss Franks

Ms Mercer (PPA cover - Monday)

Mr West (Sports Coach - Monday)



# Welcome from the Headteacher

*I am delighted to introduce you to your child's next year of learning. This booklet aims to provide you with an overview of the broad curriculum your child will engage with over the coming academic year. It also details the enrichment opportunities teachers have planned to enhance the children's knowledge, skills and experience.*

*It is important to me that our school develops the whole child, and I am committed to creating a positive and nurturing environment where all children can explore, learn and grow, both personally and academically.*

*Our school vision is:*

***We value each child for who they are and prepare them for who they can become.***

*Our school values are:*

***Care, Community and Courage***

*As a school, we recognise that everyone matters, we are all neighbours, and we must act with both compassion and bravery. We want children to be inquisitive of the world around them and reach for the best in themselves.*

*As a Church of England school, we believe the verse that represents what we are aiming to achieve is:*

***'Encourage one another and build each other up' (Thessalonians 5:11)***

*It is essential that the school works in partnership with parents and carers, and effective communication between home and school is key. We use Class Dojo as our main form of communication however you can find additional details on the curriculum on our school website.*

*Thank you for your support and I look forward to seeing your child continue to flourish.*

*Mrs R. Major*

# Year 3 Curriculum

## **DISCOVER TERM (History Focus in the Autumn):**

- During the Discover term, we begin by looking at the Stone Age to Iron Age period. We will learn how to order events on a timeline and discover the differences between the two time periods. We will also experience a fantastic school trip to the Collection Museum in Lincoln to discover some prehistoric artefacts for ourselves!
- In the second half of the Discover term, we learn all about the Ancient Greeks. We will learn how the Greeks impacted the modern world and will explore how to compare a historical period to modern day. Our English will link to this and we will read and re-write Ancient Greek myths. We will also have a super time with our in-school Greek Day, re-enacting the Greek Olympics and trying tasty Greek food!

## **EXPLORE TERM (Geography Focus in the Spring):**

- In Spring 1, we will explore natural disasters! We will learn how to use maps and globes and will use this knowledge to discover the volcanoes located along the Ring of Fire. We will discover the causes of a volcano and debate the positive and negative effects of a volcanic eruption. We will make our own volcanoes and watch them explode!
- We will then explore map work, orienteering and how to look after the Earth. We will go on a walk around Coddington, finding spots previously seen on our maps!

## **CREATE TERM (Art Focus in the Summer):**

- In our first Summer topic, we will learn about Magnets. We will also invite an artist into the classroom to create beautiful pieces of work with the children.
- In Summer 2, our focus will be upon shadows. The children will create Shadow puppets and put them to good use in our Summer camp-out!

## **English Writing:**

- Fantasy narrative
- Diary entries
- Setting description
- Character description
- Recounts
- Advertisements
- Instructional writing
- Letters
- Poetry
- Persuasive posters
- Dialogue
- Non-chronological reports
- Warning posters
- Captions
- Alternative endings
- Speech/thought bubbles

## **Maths:**

- Place value
- Addition and subtraction
- Multiplication and division
- Length and perimeter
- Fractions A
- Mass and capacity
- Fractions B
- Money
- Time
- Shape
- Statistics

### **Books we will read:**

- Nen and the Lonely Fisherman (Ian Eagleton)
- The First Drawing (Mordicai Gerstein)
- The Tear Thief (Carol Ann Duffy)
- Cinderella of the Nile (Beverly Naidoo)
- The Pied Piper of Hamelin (Michael Morpurgo)
- Escape from Pompeii (Christina Balit)
- The Barnabus Project (The Fan Brothers)
- Black Dog (Levi Pinfold)
- The Mysteries of Harris Burdick (Chris van Allsberg)
- The Last Garden (Rachel Ip)
- Jim, A Cautionary Tale (Hillaire Belloc)
- The Day I Swapped my Dad for Two Goldfish (Neil Gaiman)
- Our class books – the children will vote to pick these!

### **Sport/PE we will play:**

- Warming up/cooling down
- Swimming
- Invasion Games
- Gymnastics
- Hockey
- Basketball
- Dance
- Tennis
- Rounders
- Athletics

### **Music we will hear:**

- Let Your Spirit Fly
- Three Little Birds
- The Dragon Song
- Bringing Us Together

### **PSHE topics:**

- Identifying positive things about myself
- Setting goals
- Facing new challenges
- Rules, rights and responsibilities
- Rewards and consequences
- Responsible choices
- Celebrating difference
- Family stereotypes
- Bullying
- Kind words and compliments
- Dreams and goals
- Being healthy
- Balanced diet
- Keeping ourselves safe
- Making friends
- Issues within friendship groups
- Showing respect
- How babies grow
- How bodies change
- Positive change

### **Projects we will create:**

- Healthy cereal bars (Food – linked to Jigsaw and Science)
- Volcanoes
- Can we make a landmark that will survive an earthquake?
- Shadow puppets

### **French:**

- Single word translation
- Accurately copy words
- Stories, song, poems and rhymes
- Basic greetings
- Singular and plural nouns
- Simple adjectives
- 'Le/la' to indicate gender of nouns



**Coddington**  
— C of E —  
Primary and Nursery  
School

### **Religious education:**

- Inspirational leaders in religion
- The Holy Trinity
- Beliefs – what does it mean to be a Christian?
- Good Friday
- Creation/Fall
- Other faiths – where and how they worship and what they believe

### **Computing:**

- Keeping safe online
- Coding
- Using the internet to search
- Combining digital media

## *Calendar of Events*

<b><i>September</i></b>	13 <sup>th</sup> – Democracy Day (choosing of pupil parliament and ambassadors) 18 <sup>th</sup> – School photos (individual) 26 <sup>th</sup> – Trip to the Collection (History trip)
<b><i>October</i></b>	8 <sup>th</sup> & 10 <sup>th</sup> – Parents Evening 10 <sup>th</sup> – Harvest festival 18 <sup>th</sup> – Neon School Disco (KS2 after school)
<b><i>November</i></b>	8 <sup>th</sup> – Discover Day (History focused – WW2) 15 <sup>th</sup> – Children in Need (non-uniform day) 26 <sup>th</sup> & 27 <sup>th</sup> – Year 3 History performance
<b><i>December</i></b>	5 <sup>th</sup> December – Greek Day (In-school) 6 <sup>th</sup> – Christmas Fayre (5.30pm-7.30pm) 12 <sup>th</sup> December – Whole school pantomime (late pick up from school) 13 <sup>th</sup> – Christmas jumper day and Christmas dinner day 19 <sup>th</sup> – Christmas party day (in classroom) 20 <sup>th</sup> – INSET day (children not in school) TBC – Christmas Church service
<b><i>January</i></b>	10 <sup>th</sup> Jan to 7 <sup>th</sup> Feb - Swimming begins for Year 3 Date TBC – Erupting volcanoes
<b><i>February</i></b>	11 <sup>th</sup> – Explore Day (Geography based - Africa) 13 <sup>th</sup> – Rockstar Disco 14 <sup>th</sup> – INSET day
<b><i>March</i></b>	5 <sup>th</sup> – World Book Day (pyjamas or fancy dress) 13 <sup>th</sup> – Science Day 20 <sup>th</sup> – Walk around Coddington 21 <sup>st</sup> – Red Nose Day (details to follow) 25 <sup>th</sup> & 27 <sup>th</sup> – Parents Evening TBC – Coddington Golden Ticket Chocolate Bar Sale TBC – Mother’s Day pop-up shop
<b><i>April</i></b>	TBC – Easter Church service
<b><i>May</i></b>	16 <sup>th</sup> – Create Day 19 <sup>th</sup> – School Photos (class) TBC – Sponsored colour run TBC – Creating shadow puppets
<b><i>June</i></b>	2 <sup>nd</sup> - INSET day 5 <sup>th</sup> – Music Create Day 26 <sup>th</sup> – Sports Day (KS2 – am) TBC – Artist visit TBC - Father’s Day pop-up shop
<b><i>July</i></b>	14 <sup>th</sup> (Week of) – Summer camp out 11 <sup>th</sup> – New classes 16 <sup>th</sup> – Transition afternoon 18 <sup>th</sup> – Reports out 22 <sup>nd</sup> - Bounceabout

# *Trips and Events Costings*

<i>Date</i>	<i>Trip/ Event</i>	<i>Approx. Cost</i>	<i>Payment Due</i>
26 <sup>th</sup> September	History trip to Collection (Lincoln)	£20	20 <sup>th</sup> September
26 <sup>th</sup> & 27 <sup>th</sup> November	History performance	£5.74	25 <sup>th</sup> November
5 <sup>th</sup> December	Greek for a Day	Greek outfit	
12 <sup>th</sup> December	Trip to Newark Palace Theatre to watch the pantomime	£16	6 <sup>th</sup> October
June	Artist visit	Approximately £2	
5 <sup>th</sup> June	Music Day	Approximately 2.50	5 <sup>th</sup> June
W/O 14 <sup>th</sup> July	Summer camp-out	£40	4 <sup>TH</sup> July
22 <sup>nd</sup> July	Bounceabout	£3.50	22 <sup>nd</sup> July

\*All costs and dates are correct at the time of printing.

## **Parent Pay**

We are a cashless school and collect all payments for trips and events through a website called ParentPay.

The school office will provide you with login details and as a family you will be able to manage the payments.

If you are in receipt of free school meals, please contact the office for reduced amounts or flexible payment options. If you are not in receipt of free school meals but will struggle to fund these activities, please talk to the office or you may want to consider contacting Coddington Trust Fund who support local families.

# General Information

## Uniform

Our uniform is:

- Burgundy jumper or cardigan
- Pale blue polo shirt
- Dark grey trousers, dress or skirt. (In warmer weather, shorts or a pale blue summer dress)
- Plain black shoes (not trainers)
- Children may wear single studs in their ears but we ask that children do not wear any other jewellery



PE uniform

- Plain black hooded top, pale blue t-shirt, plain black tracksuit trousers or shorts
- Trainers

*Please note, it is not compulsory for children to have the school logo on their clothes.*

## School Meals

We provide a fresh healthy nutritious meal cooked from scratch every day.

Families can decide daily if they would like their child to have:

- A hot dinner, a three-week menu is provided on the website
- A cold meal, either cheese, ham or tuna mayonnaise sandwich
- A panini, either cheese or ham
- A jacket potato with cheese, cheese and beans or tuna mayonnaise

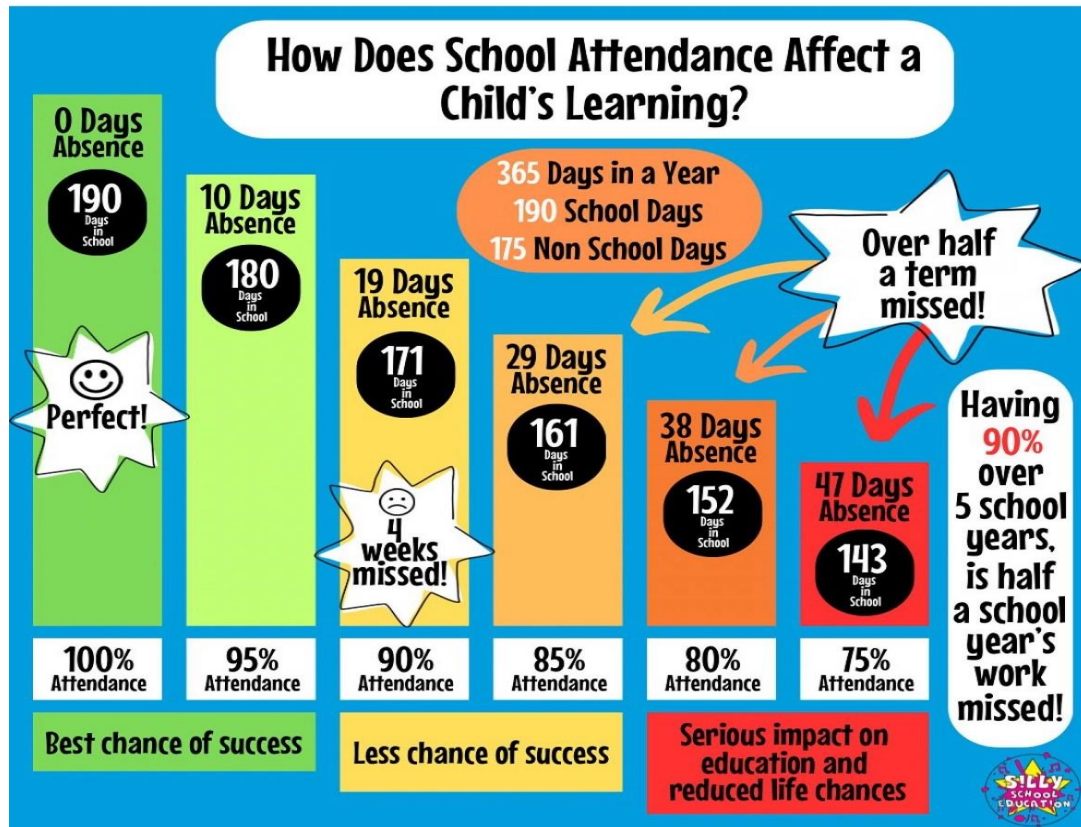
Children can also bring in a healthy packed lunch (no hot food please).

Whilst the register is being taken in the morning the children will be asked what they are having for lunch. There is no need to pre-order. School meals are £2.95.

Payments will be added to ParentPay, except for Reception, Year 1 and Year 2 children who are eligible for universal free school meals.



# Attendance



We know that sometimes our pupils cannot come to school because they are really unwell - and that's the right thing to do for them and other pupils. Medical advice is clear however that children with mild illness will often be well enough to attend - for example if they have a cough, or cold, without a temperature. The NHS also states that children who are taking antibiotics can still attend school. The NHS guidance 'Is my child too ill for school?' - NHS ([www.nhs.uk](http://www.nhs.uk)) is designed to support parents in their decision making about mild illness.

We also know that pupils fall behind their friends and classmates when they miss school. We want the amount of missed education to be reduced as much as possible.

We believe that our community is stronger together, with all our pupils in school, on time, every day.

We are building life skills, life-long friendships and preparing your child for future success – we can only do this, if they are in school.

# *How to help your child*

The best way to support your child's learning is for your child to attend school daily, on time and ready to learn!

Other ways you could support your child's learning are listed below:

## **Maths**

- TT Rockstars practice – this will help your children with their times tables!
- Spending time with children looking at analogue clocks and discussing time
- Handling money

## **Reading**

- Reading regularly – school books as well as reading for pleasure!
- Asking children questions about what they are reading
- Encourage children to read a wide range of texts
- Diaries

## **Spelling**

- Children will learn a new spelling rule each week. As part of their homework, we will ask them to think of/research 6 words that fit that spelling rule. For example, 6 words that end with the suffix –ful.
- We will then look at these words in our English lessons.

## **Topic/other**

- Occasional Science/Topic homework will be sent home with the children as appropriate
- Please feel free to do additional, supervised research about any of the topics studied in school (online, videos, television, books)

# Signposting

**Safeguarding:** If you have a safeguarding concern, please consider if you need to contact the police or MASH (0300 500 80 90) first. If you do need to contact the school – please email [safeguarding@coddington.notts.sch.uk](mailto:safeguarding@coddington.notts.sch.uk).

**Family Engagement Officer:** Mrs Hanstock works closely with school staff, local community services, preventative services, and social services to ensure that the needs of the children are being met. She also supports children's pastoral needs including emotional, social, welfare, care and health.  
Tel: 01636 702974      Email: [n.hanstock@coddington.notts.sch.uk](mailto:n.hanstock@coddington.notts.sch.uk)

**Pupil Premium Lead:** Mrs Penn is our Pupil Premium Champion and leads on the funding and support for Pupil Premium, Looked After Children and Post Looked After Children.  
Tel: 01636 702974      Email: [l.penn@coddington.notts.sch.uk](mailto:l.penn@coddington.notts.sch.uk)

**SENDCo:** Mrs Mercer is our Special Educational Needs and Disability Co-ordinator and leads on the funding and support for SEND and EAL children.  
Tel: 01636 702974      Email: [c.mercer@coddington.notts.sch.uk](mailto:c.mercer@coddington.notts.sch.uk)

**Speech and Language Lead:** Mrs Connor leads on SALT across the school. If you are concerned about your child's speech, please contact Mrs Connor or your class teacher.  
Tel: 01636 702974      Email: [r.connor@coddington.notts.sch.uk](mailto:r.connor@coddington.notts.sch.uk)

**Governors:** Sarah Evans is our Chair of Governors. If you need to contact the Governors for any reason (other than can be dealt reasonably by the Head Teacher).  
Email: [governor@coddington.notts.sch.uk](mailto:governor@coddington.notts.sch.uk)

**Friends of Coddington School:** This is our PTA group. If you would like to get involved, please contact the chair, Natalie Henstock Email: [friendsofcoddington@outlook.com](mailto:friendsofcoddington@outlook.com)

**Ask Us Notts:** local information and advice for Nottinghamshire residents. [www.askusnotts.org.uk](http://www.askusnotts.org.uk)

**Food Bank:** Collingham Food Pantry [collinghamfoodbank@gmail.com](mailto:collinghamfoodbank@gmail.com)

**Home-Start Newark:** Home-Start Newark helps families with young children deal with whatever life throws at them. They support parents as they learn to cope, improve their confidence and build better lives for their children. [www.homestartnewark.co.uk](http://www.homestartnewark.co.uk)

**Mind:** For free mental health and advice. Tel: 0300 123 3393

**Newark Women's Aid:** Newark Women's Aid is an independent, local charity providing specialist services to support women with or without children who have experienced physical, sexual, emotional, psychological, or economic abuse.  
Phone: 01636 679687      Email: [newarkwomensaid@btconnect.com](mailto:newarkwomensaid@btconnect.com)

# School Calendar

# 2024-2025



**Coddington**  
— C of E —  
Primary and Nursery  
School

## Term dates for pupils

### Autumn term 2024

School opens – Tuesday 3 September 2024  
Half term - Monday 21 October 2024 to Friday 1 November 2024.

School closes for Christmas – evening Thursday 19 December 2024.

### Spring term 2025

School opens – Monday 6 January 2025  
Half term - Monday 17 February 2025 to Friday 21 February 2025.

School closes for Easter – evening Friday 4 April 2025.

### Summer term 2025

School opens - Monday 22 April 2025  
Half term – Monday 26 May 2025 to Friday 30 May 2025.

School Closes for the summer – evening Friday 25 July 2025.

SEPTEMBER							OCTOBER							NOVEMBER						
M	T	W	T	F	S	S	M	T	W	T	F	S	S	M	T	W	T	F	S	S
2	3	4	5	6	7	8	1	2	3	4	5	6	1	2	3					
9	10	11	12	13	14	15	7	8	9	10	11	12	13	4	5	6	7	8	9	10
16	17	18	19	20	21	22	14	15	16	17	18	19	20	11	12	13	14	15	16	17
23	24	25	26	27	28	29	21	22	23	24	25	26	27	18	19	20	21	22	23	24
30							28	29	30	31	25	26	27	28	29	30				

DECEMBER							JANUARY							FEBRUARY						
M	T	W	T	F	S	S	M	T	W	T	F	S	S	M	T	W	T	F	S	S
						1	1	2	3	3	4	5	6	7	8	9	1	2		
2	3	4	5	6	7	8	6	7	8	9	10	11	12	3	4	5	6	7	8	9
9	10	11	12	13	14	15	13	14	15	16	17	18	19	10	11	12	13	14	15	16
16	17	18	19	20	21	22	20	21	22	23	24	25	26	17	18	19	20	21	22	23
23	24	25	26	27	28	29	27	28	29	30	31	24	25	26	27	28				

MARCH							APRIL							MAY						
M	T	W	T	F	S	S	M	T	W	T	F	S	S	M	T	W	T	F	S	S
						1	1	2	3	4	5	6	1	2	3	4				
3	4	5	6	7	8	9	7	8	9	10	11	12	13	5	6	7	8	9	10	11
10	11	12	13	14	15	16	14	15	16	17	18	19	20	12	13	14	15	16	17	18
17	18	19	20	21	22	23	21	22	23	24	25	26	27	19	20	21	22	23	24	26
24	25	26	27	28	29	30	28	29	30	31	26	27	28	29	30	31				
31																				

JUNE							JULY							AUGUST						
M	T	W	T	F	S	S	M	T	W	T	F	S	S	M	T	W	T	F	S	S
						1	1	2	3	4	5	6	1	2	3					
2	3	4	5	6	7	8	7	8	9	10	11	12	13	4	5	6	7	8	9	10
9	10	11	12	13	14	15	14	15	16	17	18	19	20	11	12	13	14	15	16	17
16	17	18	19	20	21	22	21	22	23	24	25	26	27	18	19	20	21	22	23	24
23	24	25	26	27	28	29	28	29	30	31	25	26	27	28	29	30	31			
30																				

Administration Day

Public Holidays

School Holidays

School Closes for the summer – evening Friday 25 July 2025.