



Coddington

— C of E —

Primary and Nursery
School

Welcome to Year 2

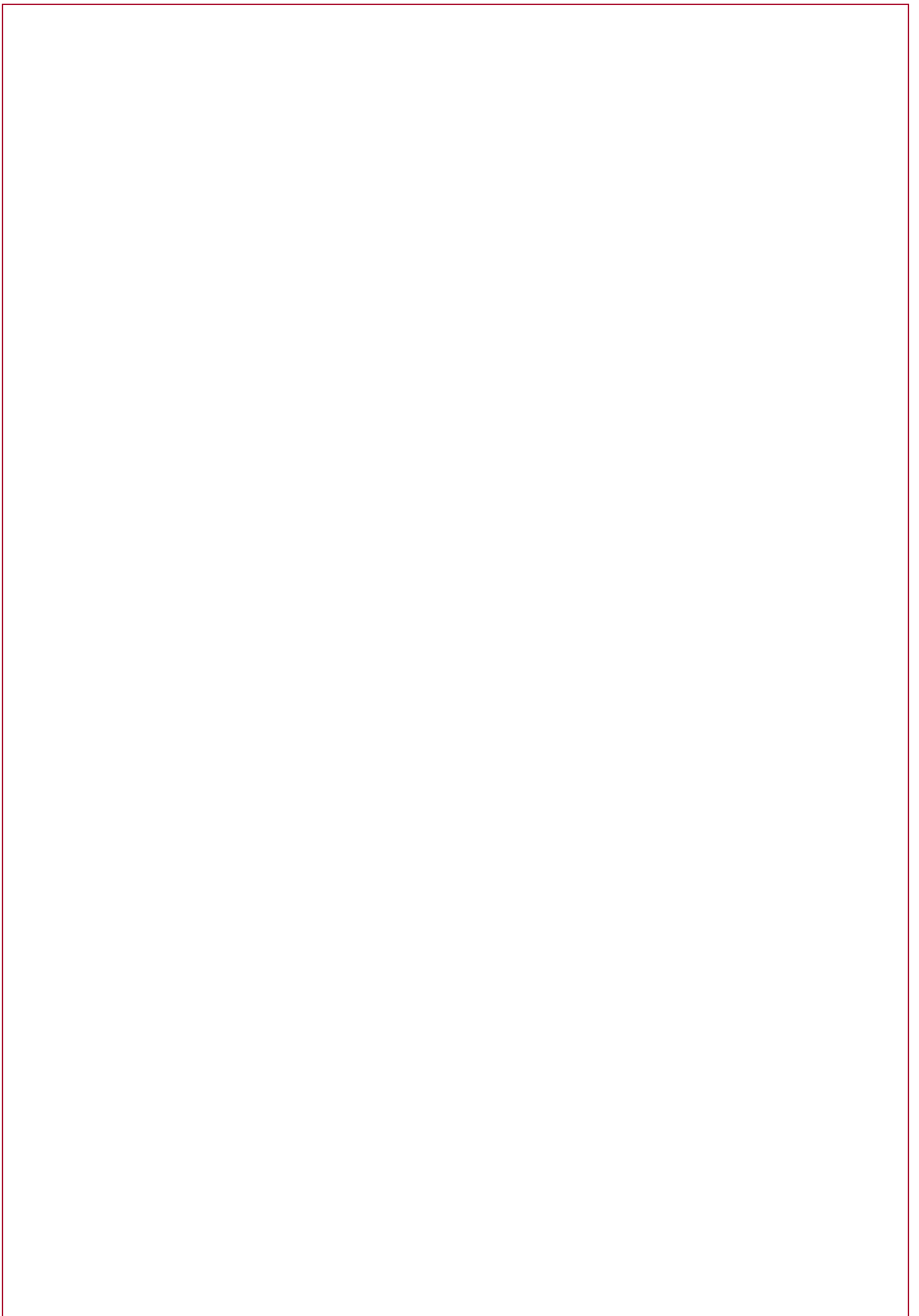
2024 - 2025

Teaching Team:

Mrs Adshead, Miss Quirk and Mrs Connor

Mrs Oxley (HLTA - PPA cover)

Coach Ben (Forest – Wednesday am PE)



Welcome from the Headteacher

I am delighted to introduce you to your child's next year of learning. This booklet aims to provide you with an overview of the broad curriculum your child will engage with over the coming academic year. It also details the enrichment opportunities teachers have planned to enhance the children's knowledge, skills and experience.

It is important to me that our school develops the whole child, and I am committed to creating a positive and nurturing environment where all children can explore, learn and grow, both personally and academically.

Our school vision is:

We value each child for who they are and prepare them for who they can become.

Our school values are:

Care, Community and Courage

As a school, we recognise that everyone matters, we are all neighbours, and we must act with both compassion and bravery. We want children to be inquisitive of the world around them and reach for the best in themselves.

As a Church of England school, we believe the verse that represents what we are aiming to achieve is:

'Encourage one another and build each other up' (Thessalonians 5:11)

It is essential that the school works in partnership with parents and carers, and effective communication between home and school is key. We use Class Dojo as our main form of communication however you can find additional details on the curriculum on our school website.

Thank you for your support and I look forward to seeing your child continue to flourish.

Mrs R. Major

Year 2 Curriculum

DISCOVER TERM (History Focus):

In the Autumn term we will be

- Learning about The Great Fire of London and how its events have shaped how we live today.
- Learning about how and why the Gunpowder Plot was devised, discovered and failed.
- Finding out that different sources of evidence can provide information about the past.
- Designing, making and evaluating fire engines.
- Creating a timeline showing how Castles have changed throughout history.
- Exploring how to build the tallest towers and the strongest drawbridges.
- Learning about the Christmas story and taking part in our Christmas Nativity.

EXPLORE TERM (Geography Focus):

In the Spring term we will be

- Learning about different types of settlements.
- Recognising human and physical features.
- Locating and naming the continents and oceans around the world.
- Learning about the Equator, the North Pole and the South Pole.
- Learning about different map symbols.
- Comparing a non-European country (Brazil) and the UK.
- Using the 4 main compass points.

CREATE TERM (Art Focus):

In the Summer term we will be

- Exploring how paint can be mixed to create new colours.
- Investigating making darker and lighter shades of colours.
- Recreating the artwork of Claude Monet and Vincent Van Gogh.
- Using clay to create textured minibeasts sitting on a leaf.
- Researching, designing, making and evaluating carrot cake.

English Writing:

- Sequel story
- Persuasive letter
- Non-chronological report
- Narrative about bravery
- Rhyming poem
- Adventure story
- Fantasy story
- Information booklet
- Explanation text

Maths:

- Place value
- Addition and subtraction
- Shape
- Money
- Multiplication and division
- Length and height
- Mass, capacity and temperature
- Fractions
- Time
- Statistics
- Position and direction

Books we will read:

- Jim and the Beanstalk
- The Journey Home
- Wolves
- The Bear and the Piano
- The Owl and the Pussycat
- The Minpins
- Ocean meets Sky
- The Great Fire of London
- Rosie Revere, engineer
- George's Marvellous Medicine
- The Boy who Grew Dragons
- The Creakers
- The Danger Gang
- The Day I fell into a Fairytale

Sport/PE we will practise:

- Gymnastics
- Net and wall games
- Dance
- Striking and fielding
- Athletics
- Invasion games
- Multi skills

Music we will hear:

- South African Music
- Nativity songs
- Rock music
- Reggae
- Western Classical

Projects we will create:

- Fire Engines (D&T project)
- Strongest towers and Drawbridges
- Carrot cake (D&T project)
- Clay minibeasts



Coddington
— C of E —
Primary and Nursery
School

PSHE topics:

- Rights and responsibilities
- Differences and bullying
- Dreams and goals
- Keeping healthy
- Friendships and relationships
- Recognising, understanding and respecting changes.
- Body parts – using the correct names

Phonics:

- Daily Read, Write Inc lesson
- Set 1, 2 and 3 sounds
- Fluent reading – words per minute

RE:

- Harvest Festival
- Important stories and people from the Bible
- The Nativity story
- How do Christians demonstrate belonging?
- Holy Week / Easter
- Services at Coddington Church

Computing:

- Coding
- Staying safe online (E-Safety)
- Combining text and images
- Creating Pictures
- Effective searching

Calendar of Events

September	School INSET Day 2 nd September Democracy Day – Friday 13 th School photos – Wednesday 18 th RWI Parent Meeting – Tuesday 24 th Partake Theatre visit– Thursday 26 th (workshop in school) NSPCC workshop - Monday 30 th
October	Harvest festival – Thursday 10 th (visit All Saints Church) Parents’ Evening – Tuesday 8 th and Thursday 10 th Neon theme Disco – Friday 18 th (in school hours)
November	Discover Day (focus on WW2) Friday 8 th Children in Need (Non-uniform Day) – Friday 15 th
December	Christmas Fair – Friday 6 th (after school) Christmas Dinner Day – Friday 13 th Christmas Jumper Day – Friday 13 th Nativity performance – Wed 18 th 10am and 2pm Christmas Church Service TBC Pantomime Trip to Newark Palace Theatre – Thursday 12 th Christmas Party (in class) – Thurs 19 th INSET Day – Friday 20 th
January	
February	Sound of Music dance workshop – Monday 3 rd Explore Day (Focus on Africa) – Tuesday 11 th Rock Star Disco – Thursday 13 th INSET Day – Friday 14 th
March	World Book Day – Thursday 5 th – Fancy dress as book character or PJs Science Day – Thursday 13 th Red Nose Day (Break the Rules Day! - Details to follow) – Friday 21 st Golden Ticket Chocolate Bar Sale – TBC Mothering Sunday Pop up shop Year 2 Brazil Day - TBC Parents Evening – 25 th and 27 th
April	Easter bonnet parade – Friday 4 th at 9am (families welcome) Easter Church Service TBC
May	Create Day (Focus on the Purpose of Art)– Friday 16 th School photos – Monday 19 th Sponsored Colour Run – TBC
June	INSET Day – Monday 2 nd Music Day (The Joy of Music) – Thursday 5 th Father’s Day Pop up Shop Sports Day -Thursday 26 th (KS2 am, KS1 pm)
July	Trip to Lincoln Castle – Wednesday 2 nd New class details released – Friday 11 th Reports out – Friday 18 th Transition Afternoon – Wednesday 16 th Bounce About – Tuesday 22 nd

Trips and Event Costings

This year we have aimed to confirm and upload all payments for the year. Most should be available on ParentPay for families to either pay in one go or budget throughout the year.

<i>Date</i>	<i>Trip/ Event</i>	<i>Approx. Cost</i>	<i>Payment Due</i>
26 th September	Partake Theatre _ The Great Fire of London	£5.50	26 th September
20 th October	School Disco (optional)	£3	20 th October
13 th December	Nativity	Costume	N/A
14 th December	Trip to Newark Palace Theatre to watch the pantomime	£16	6 th Oct
9 th February	School Disco (optional)	£3	9 th February
22 nd February	Music and Dance workshop	£3.50	22 nd February
28 th March	Easter bonnet parade	Easter bonnet	N/A
March (TBC)	Brazil Day	£1	1 st March
2 nd July	Lincoln Castle	£20	16 th June
22 nd July	Drumming workshop	£2.50	22 nd July
25 th July	Bounce About	£3.50	25 th July

*All costs and dates are correct at the time of printing.

Parent Pay

We are a cashless school and collect all payments for trips and events through a website called ParentPay.

The school office will provide you with login details and as a family you will be able to manage the payments.

If you are in receipt of free school meals (not including universal free meals) or your child benefits from Pupil Premium, please contact the office for reduced amounts or flexible payment options if necessary. If you are not in receipt of free school meals but will struggle to fund these activities, please talk to the office or you may want to consider contacting Coddington Trust Fund who support local families.

General Information

Uniform

Our uniform is:

- Burgundy jumper or cardigan
- Pale blue polo shirt
- Dark grey trousers, dress or skirt. (In summer this can be substituted for shorts or a pale blue summer dress)
- Plain black shoes (not trainers)
- Children may wear single studs in their ears but we ask that children do not wear any other jewellery



PE uniform

- Black hooded top, Pale blue t-shirt, Black tracksuit trousers or shorts
- Trainers

Please note, it is not compulsory for children to have the school logo on their clothes.

School Meals

Our kitchen provide fresh, healthy meals cooked on site every day using locally sourced produce.

Families can decide daily if they would like their child to have:

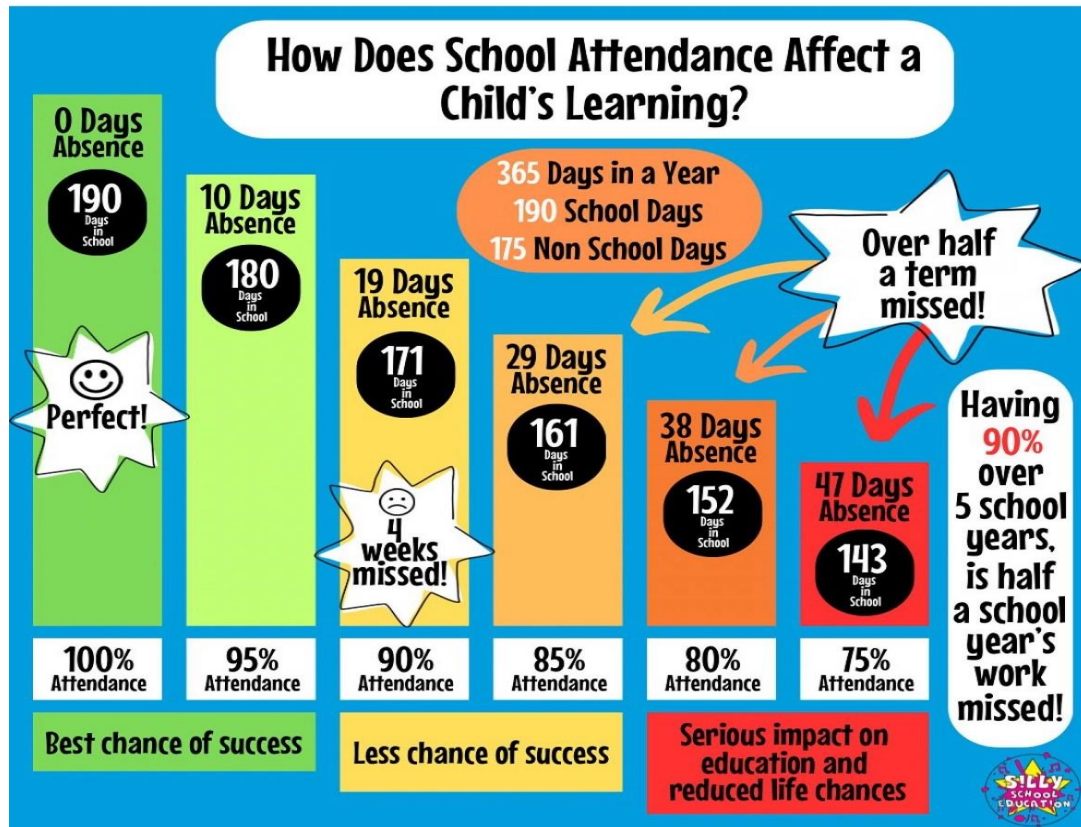
- A hot dinner, a three-week menu is provided on the website
- A cold meal, either cheese, ham or tuna mayonnaise sandwich
- A panini, either cheese or ham
- A jacket potato with cheese, cheese and beans or tuna mayonnaise

Children can also bring in a healthy packed lunch (no hot food please).

Whilst the register is being taken in the morning the children will be asked what they are having for lunch. There is no need to pre-order.

Payments will be added to ParentPay, except for Reception, Year 1 and Year 2 children who are eligible for universal free school meals.

Attendance



We know that sometimes our pupils cannot come to school because they are really unwell - and that's the right thing to do for them and other pupils. Medical advice is clear however that children with mild illness will often be well enough to attend - for example if they have a cough, or cold, without a temperature. The NHS also states that children who are taking antibiotics can still attend school. The NHS guidance 'Is my child too ill for school?' - NHS (www.nhs.uk) is designed to support parents in their decision making about mild illness.

We also know that pupils fall behind their friends and classmates when they miss school. We want the amount of missed education to be reduced as much as possible.

We believe that our community is stronger together, with all our pupils in school, on time, every day.

We are building life skills, life-long friendships and preparing your child for future success – we can only do this, if they are in school.

How to help your child

The best way to support your child's learning is for your child to attend school daily, on time and ready to learn! Other ways you could support your child's learning are listed below:

Maths

- Practise number bonds to 10 (9+1, 2+8...) and 20 (11+ 9, 12 + 8...)
- Practise multiplication and division facts for 2s, 5s and 10s
- Recognising and using money
- Reading the time to 5-minute intervals on an analogue clock

Reading

- Listen to your child read at least 3x a week
- Ask questions about what they have read/are reading
- Share a variety of books/texts together to expose to new vocabulary and styles of writing.
- Use termly RWI codes to support phonics sound knowledge

Spelling

- Learn and practise weekly spelling rules/words, including using the spelling words in sentences to ensure understanding of them.

Topic /other

- Regularly ask what your child has been learning about.
- Complete extra research about the Topic area being studied for Discover, Explore, Create (see above for more information)
- Make a fact file/poster/information sheet.
- Bring in topic related show and tell.

Signposting

Safeguarding: If you do have a safeguarding concern, please consider if you need to contact the police or MASH (0300 500 80 90) first. If you do need to contact the school – please email safeguarding@coddington.notts.sch.uk.

Family Engagement Officer: Mrs Hanstock works closely with school staff, local community services, preventative services, and social services to ensure that the needs of the children are being met. She also supports children's pastoral needs including emotional, social, welfare, care and health.
Tel: 01636 702974 Email: n.hanstock@coddington.notts.sch.uk

Pupil Premium Lead: Mrs Penn is our Pupil Premium Champion and leads on the funding and support for Pupil Premium, Looked After Children and Post Looked After Children.
Tel: 01636 702974 Email: l.penn@coddington.notts.sch.uk

SENDCo: Mrs Mercer is our Special Educational Needs and Disability Co-ordinator and leads on the funding and support for SEND and EAL children.
Tel: 01636 702974 Email: c.mercer@coddington.notts.sch.uk

Speech and Language Lead: Mrs Connor leads on SALT across the school. If you are concerned about your child's speech, please contact Mrs Connor or your class teacher.
Tel: 01636 702974 Email: r.connor@coddington.notts.sch.uk

Governors: Sarah Evans is our Chair of Governors. If you need to contact the Governors for any reason (other than can be dealt reasonably by the Head Teacher).
Email: governor@coddington.notts.sch.uk

Friends of Coddington School: This is our PTA group. If you would like to get involved, please contact the chair, Natalie Henstock Email: friendsofcoddington@outlook.com

Ask Us Notts: local information and advice for Nottinghamshire residents. www.askusnotts.org.uk

Food Bank: Collingham Food Pantry collinghamfoodbank@gmail.com

Home-Start Newark: Home-Start Newark helps families with young children deal with whatever life throws at them. They support parents as they learn to cope, improve their confidence and build better lives for their children.

Mind: For free mental health and advice. Tel: 0300 123 3393

Newark Women's Aid: Newark Women's Aid is an independent, local charity providing specialist services to support women with or without children who have experienced physical, sexual, emotional, psychological, or economic abuse.
Phone: 01636 679687 Email: newarkwomensaid@btconnect.com

School Calendar

2024-2025



Coddington

C of E
Primary and Nursery
School

Term dates for pupils

Autumn term 2024

School opens – Tuesday 3 September 2024
Half term – Monday 21 October 2024 to Friday 1 November 2024.

School closes for Christmas – evening Thursday 19 December 2024.

Spring term 2025

School opens – Monday 6 January 2025
Half term – Monday 17 February 2025 to Friday 21 February 2025.

School closes for Easter – evening Friday 4 April 2025.

Summer term 2025

School opens - Monday 22 April 2025
Half term – Monday 26 May 2025 to Friday 30 May 2025.

School Closes for the summer – evening Friday 25 July 2025.

SEPTEMBER							OCTOBER							NOVEMBER									
M	T	W	T	F	S	S	M	T	W	T	F	S	S	M	T	W	T	F	S	S			
2	3	4	5	6	7	8	7	8	9	10	11	12	13	4	5	6	7	8	9	10			
9	10	11	12	13	14	15	14	15	16	17	18	19	20	11	12	13	14	15	16	17			
16	17	18	19	20	21	22	21	22	23	24	25	26	27	18	19	20	21	22	23	24			
23	24	25	26	27	28	29	28	29	30	31	25	26	27	28	29	30							
30																							

DECEMBER							JANUARY							FEBRUARY									
M	T	W	T	F	S	S	M	T	W	T	F	S	S	M	T	W	T	F	S	S			
2	3	4	5	6	7	8	6	7	8	9	10	11	12	3	4	5	6	7	8	9			
9	10	11	12	13	14	15	13	14	15	16	17	18	19	10	11	12	13	14	15	16			
16	17	18	19	20	21	22	20	21	22	23	24	25	26	17	18	19	20	21	22	23			
23	24	25	26	27	28	29	27	28	29	30	31	24	25	26	27	28							

MARCH							APRIL							MAY									
M	T	W	T	F	S	S	M	T	W	T	F	S	S	M	T	W	T	F	S	S			
3	4	5	6	7	8	9	7	8	9	10	11	12	13	5	6	7	8	9	10	11			
10	11	12	13	14	15	16	14	15	16	17	18	19	20	12	13	14	15	16	17	18			
17	18	19	20	21	22	23	21	22	23	24	25	26	27	19	20	21	22	23	24	26			
24	25	26	27	28	29	30	28	29	30	31	26	27	28	29	30	31							
31																							

JUNE							JULY							AUGUST								
M	T	W	T	F	S	S	M	T	W	T	F	S	S	M	T	W	T	F	S	S		
2	3	4	5	6	7	8	7	8	9	10	11	12	13	4	5	6	7	8	9	10		
9	10	11	12	13	14	15	14	15	16	17	18	19	20	11	12	13	14	15	16	17		
16	17	18	19	20	21	22	21	22	23	24	25	26	27	18	19	20	21	22	23	24		
23	24	25	26	27	28	29	28	29	30	31	25	26	27	28	29	30	31					
30																						

Administration Day

Public Holidays

School Holidays

School Holidays