



Coddington

— C of E —

Primary and Nursery
School

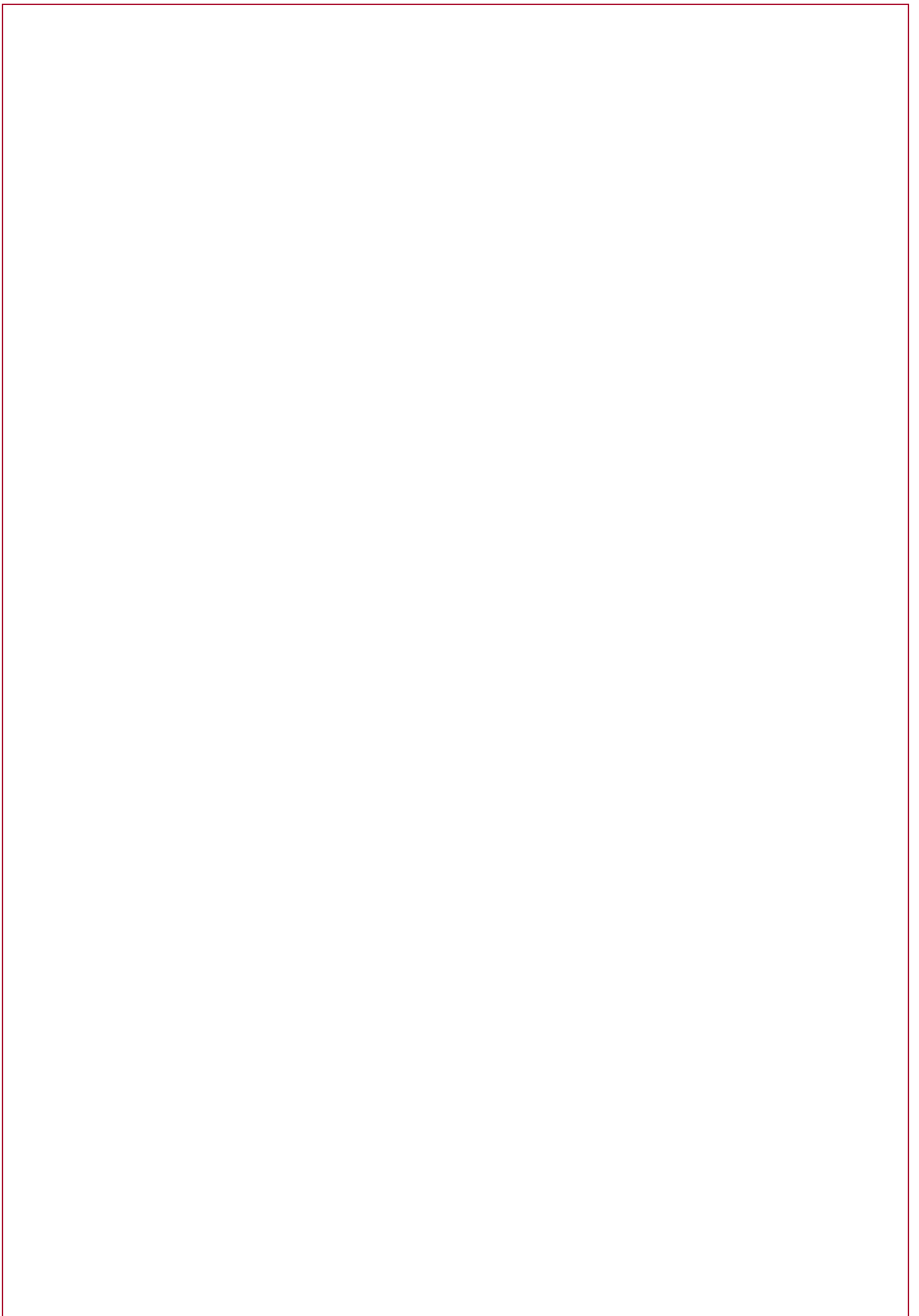
Welcome to Year 1

2024 - 2025

Teaching Team:

Mrs Wells, Mrs Gibson (Mon, Tues, Wed) and Mrs Metcalf (Wed, Thurs, Fri)

Mrs Whitehead (HLTA PPA cover), Mrs Kennett (TA), Coach Ben (Forest Wednesday PM)



Welcome from the Headteacher

I am delighted to introduce you to your child's next year of learning. This booklet aims to provide you with an overview of the broad curriculum your child will engage with over the coming academic year. It also details the enrichment opportunities teachers have planned to enhance the children's knowledge, skills and experience.

It is important to me that our school develops the whole child, and I am committed to creating a positive and nurturing environment where all children can explore, learn and grow, both personally and academically.

Our school vision is:

We value each child for who they are and prepare them for who they can become.

Our school values are:

Care, Community and Courage

As a school, we recognise that everyone matters, we are all neighbours, and we must act with both compassion and bravery. We want children to be inquisitive of the world around them and reach for the best in themselves.

As a Church of England school, we believe the verse that represents what we are aiming to achieve is:

'Encourage one another and build each other up' (Thessalonians 5:11)

It is essential that the school works in partnership with parents and carers, and effective communication between home and school is key. We use Class Dojo as our main form of communication however you can find additional details on the curriculum on our school website.

Thank you for your support and I look forward to seeing your child continue to flourish.

Mrs R. Major

Year 1 Curriculum

DISCOVER TERM (History Focus):

In this term we will be

- Learning about everyday heroes in history. These will include Grace Darling, Florence Nightingale, Tim Peake and Neil Armstrong.
- Finding out that not all superheroes wear capes but that they go about their everyday business making a difference in other people's lives. Linking in with our topic we will have a visit from the RNLI and re-enact the story of Grace Darling.
- Learning about the story of Mary Anning and her discovery of fossils on a beach.
- Going on an exciting trip to The Collection Museum in Lincoln to further our understanding.
- Creating a timeline showing significant people and events in history.

EXPLORE TERM (Geography Focus):

In this term we will be

- Learning about our local area. We will have a walk around the village and learn a little more about the place we live and its landmarks.
- Learning about compasses and the four points on this, together with physical and manmade features of our world.
- Looking at symbols on a map and what they mean.
- Looking at maps and identifying the four countries within the United Kingdom.
- Learning about different materials and their properties.

CREATE TERM (Art Focus):

In this term we will be

- Learning about the structure of plants and trees.
- Looking at the artist Monet and draw pictures in his likeness using different lines and form.
- Learning that plants can grow in different places and that trees can be deciduous or evergreen.
- Making a visit to the woods and learning about what goes on there.
- Learning about animals and the differences between the species, their natural habitat and what they like to eat.
- Learning about the artist Rousseau and creating a diorama (3D model) using a variety of materials.

English Writing:

- Story writing related to our class texts.
- Instructions
- Letters
- Postcards
- Reports
- Recounts
- Poems

Maths:

- Place value within 100
- Addition and Subtraction within 20
- Shape
- Length and Height
- Mass and Volume
- Multiplication and Division
- Fractions
- Position and Direction
- Money
- Time

Books we will read:

- Major Glad and Major Dizzy
- Rapunzel
- Hermelina
- Secret of Black Rock
- Where the Wild Things Are
- The Last Wolf

Sport/PE we will play:

- Dance
- Gymnastics
- Multi Skills
- Yoga
- Ball Skills
- Games

Music we will hear:

- Beat and rhythm
- Different genres of music
- Different musical instruments
- Songs

Projects we will create:

- Pop Up Christmas Card
- Clay Christmas Decorations
- Food Preparation for a Party
- Sewing
- Woodland Dioramas



Coddington

— C of E —
Primary and Nursery
School

PSHE topics:

- Relationships
- Friendships, Similarities and Differences
- Aspirations for the future
- Looking after our bodies
- Our Families
- Body Parts – using the correct names
- Respecting our bodies

Phonics:

- Daily Read, Write Inc
- Phonic Screener Preparation
- Phonic Screener - June

RE:

- Celebrations
- Stories Jesus told
- Christianity
- Judaism
- Who is God?
- Creation

Computing:

- Using Cameras
- Internet Safety
- Word Processing
- Drawing Pictures – related to Monet
- Creating Music
- Coding

Calendar of Events

September	RNLI Visit 10th September Democracy Day Friday 13 th September School photos – Wednesday 18 th September Read Write Inc Parent Meeting – Tuesday 24 th September
October	Collection Museum Trip, Lincoln – Tuesday 1 st October Parents Evening 8 th & 10 th October Possible other visits by Emergency Services (TBC) Harvest Festival – Thursday 10 th October Disco – Friday 18 th October – during school day – neon themed
November	Discover Day (focus on WW2) Friday 8 th November Children in Need – 15 th November – non uniform (Pudsey)
December	Christmas Nativity Dress Rehearsal – Monday 2 nd December Christmas Nativity – Wednesday 4 th December, 10.00 a.m. and 2.00 p.m. Christmas Fair – Friday 6 th (5:30p.m. -7:30 p.m.) Trip to Newark Palace Theatre for Panto – Thursday 12 th December – late pick up. Christmas Dinner Day – Friday 13 th December Christmas Jumper Day – Friday 13 th December Christmas Church Service Monday 16 th December Christmas Party – Thursday 19 th December Inset Day – Friday 20 th December
January	Local Walk around Coddington – Thursday 30 th January
February	Sound of Music Dance workshop – Monday 3 rd February Geography Explore Day (Focus on Africa) – Tuesday 11 th February Spring Disco – Thursday 13 th February – rock star themed Inset Day – Friday 14 th February
March	World Book Day – Wednesday 5 th March – Fancy dress as book character or pyjamas Science Day – Thursday 13 th March Visiting Artist – Gemma Adshead – Tuesday 18 th March Red Nose Day – Friday 21 st March – break the rules day (details to follow!) Parents Evening – 25 th & 27 th March Golden Ticket Chocolate Bar Sale (TBC) Mother's Day Pop Up Shop (TBC)
April	Easter bonnet parade – Friday 4 th April at 9am (families welcome) Easter Church Service Friday 4 th April
May	Partake visiting school – Robin Hood – Tuesday 6 th May Art Create Day (Focus on the Purpose of Art)– Friday 16 th May Class Photos – Monday 19 th May Sponsored Colour Run – (TBC)
June	Inset Day – Monday 2 nd June Music Create Day – Thursday 5 th June Phonics Screening check – week beginning 9 th June 2025 – Please do not book a holiday for this week. Trip to the Church – Tuesday 10 th June Hill Holt Wood – visit to the woods – 25 th June 2025 Sports Day – Thursday 26 th June (KS1 - pm) Father's Day Pop Up Shop
July	New Class Details – Friday 11 th July Transition Day – Wednesday 16 th July Reports – Friday 18 th July Bounce About – Tuesday 22 nd July

Trips and Event Costings

<i>Date</i>	<i>Trip/ Event</i>	<i>Approx. Cost</i>	<i>Payment Due</i>
10 th September 2024	RNLI visit to school	Donation only	
19 th November 2024	Collection - Lincoln	£20	4 th November
12 th December 2024	Trip to Newark Palace Theatre to watch the pantomime	£16	6 th October
3 rd February 2025	Music and Dance workshop	£3.50	2 nd February
18 th March 2025	Artist – Gemma Adshead	£2	17 th March
4 th April 2025	Easter bonnet parade	Easter bonnet	
6 th May 2025	Partake – Robin Hood	£8.00	5 th May
5 th June 2025	Drumming workshop	£2.50	4 th June
25 th June 2025	Hill Holt Wood	£23	9 th June
22 nd July 2025	Bounce About	£3.50	21 st July

*All costs are correct at the time of printing.

Parent Pay

We are a cashless school and collect all payments for trips and events through a website called ParentPay.

The school office will provide you with login details and as a family you will be able to manage the payments.

If you are in receipt of free school meals, please contact the office for reduced amounts or flexible payment options. If you are not in receipt of free school meals but will struggle to fund these activities, please talk to the office or you may want to consider contacting Coddington Trust Fund who support local families.

General Information

Uniform

Our uniform is:

- Burgundy jumper or cardigan
- Pale blue polo shirt
- Dark grey trousers, dress or skirt. (In summer this can be substituted for shorts or a pale blue summer dress)
- Plain black shoes (not trainers)
- Children may wear single studs in their ears but we ask that children do not wear any other jewellery



PE uniform

- Black hooded top, Pale blue t-shirt, Black tracksuit trousers or shorts
- Trainers

Please note, it is not compulsory for children to have the school logo on their clothes.

School Meals

We provide a fresh healthy nutritious meal cooked from scratch every day using locally sourced produce from our award-winning suppliers.

Families can decide daily if they would like their child to have:

- A hot dinner, a three-week menu is provided on the website
- A cold meal, either cheese, ham or tuna mayonnaise sandwich
- A panini, either cheese or ham
- A jacket potato with cheese, cheese and beans or tuna mayonnaise

Children can also bring in a healthy packed lunch (no hot food please).

Whilst the register is being taken in the morning the children will be asked what they are having for lunch. There is no need to pre-order.

Payments will be added to ParentPay, except for Reception, Year 1 and Year 2 children who are eligible for universal free school meals.

How to help your child

The best way to support your child's learning is for your child to attend school daily, on time and ready to learn!

Other ways you could support your child's learning are listed below:

Maths

- Numbots (login to follow)
- Numberblocks (CBeebies)
- Numberjacks (google)
- Counting and Number Formation
- Purple Mash

Reading

- Reading daily with your child
- Sharing bedtime stories
- Reading in context (menus, comic books, labels, signs etc)
- Purple Mash

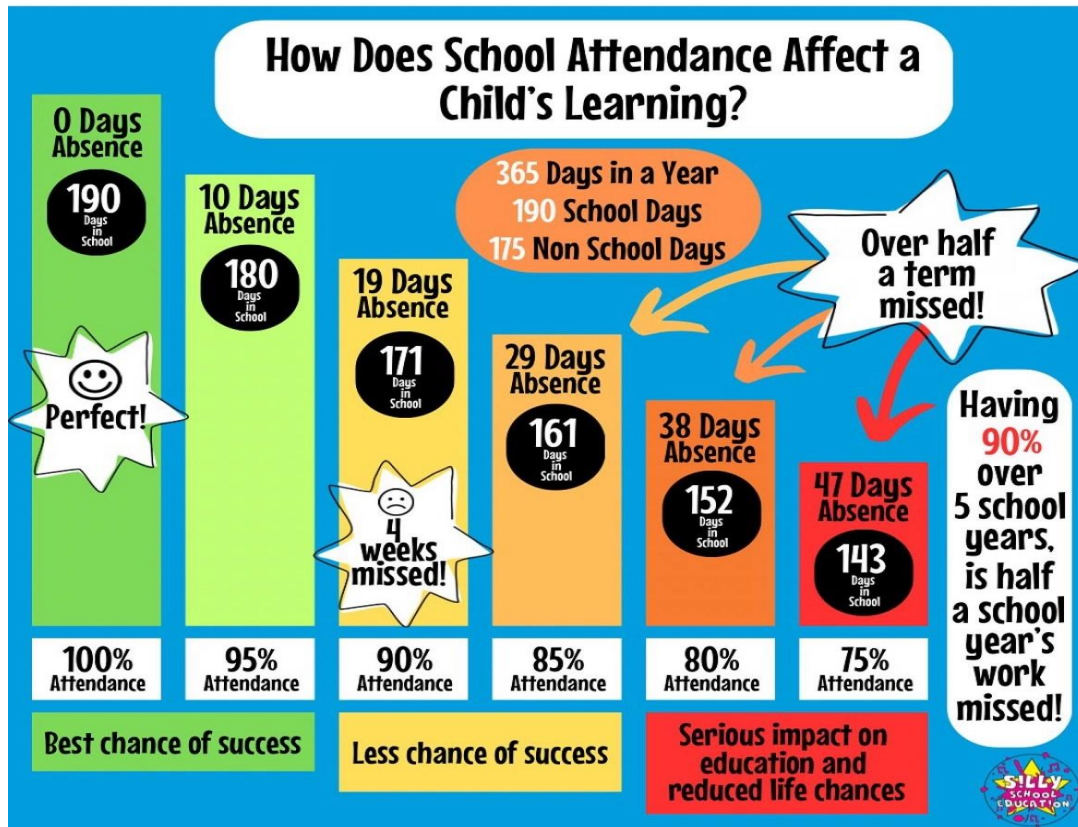
Phonics

- Alphablocks (CBeebies)
- Geraldine the Giraffe (you tube)
- Barcode (Read Write Inc) links (to follow throughout the year)

Topic /other -

- Term 1 – Discover (History) – find out about everyday heroes (doctors, nurses etc), dinosaurs and space.
- Term 2 – Explore – (Geography) – find out about your local area. Draw a map of your house/garden.
- Term 3 – Create – (The Arts) – create a woodland picture, go on a woodland walk, create some music.

Attendance



We know that sometimes our pupils cannot come to school because they are really unwell - and that's the right thing to do for them and other pupils. Medical advice is clear however that children with mild illness will often be well enough to attend - for example if they have a cough, or cold, without a temperature. The NHS also states that children who are taking antibiotics can still attend school. The NHS guidance 'Is my child too ill for school?' - NHS (www.nhs.uk) is designed to support parents in their decision making about mild illness.

We also know that pupils fall behind their friends and classmates when they miss school. We want the amount of missed education to be reduced as much as possible.

We believe that our community is stronger together, with all our pupils in school, on time, every day.

We are building life skills, life-long friendships and preparing your child for future success – we can only do this, if they are in school.

Signposting

Safeguarding: If you have a safeguarding concern, please consider if you need to contact the police or MASH (0300 500 80 90) first. If you do need to contact the school, please email safeguarding@coddington.notts.sch.uk

Family Engagement Officer: Mrs Hanstock works closely with school staff, local community services, preventative services, and social services to ensure that the needs of the children are being met. She also supports children's pastoral needs including emotional, social, welfare, care and health.
Tel: 01636 702974 Email: n.hanstock@coddington.notts.sch.uk

Pupil Premium Lead: Mrs Penn is our Pupil Premium Champion and leads on the funding and support for Pupil Premium, Looked After Children and Post Looked After Children.
Tel: 01636 702974 Email: l.penn@coddington.notts.sch.uk

SENDCo: Mrs Mercer is our Special Educational Needs and Disability Co-ordinator and leads on the funding and support for SEND and EAL children.
Tel: 01636 702974 Email: c.mercer@coddington.notts.sch.uk

Speech and Language Lead: Mrs Connor leads on SALT across the school. If you are concerned about your child's speech, please contact Mrs Connor or your class teacher.
Tel: 01636 702974 Email: r.connor@coddington.notts.sch.uk

Governors: Sarah Evans is our Chair of Governors. If you need to contact the Governors for any reason (other than can be dealt reasonably by the Head Teacher).
Email: governor@coddington.notts.sch.uk

Friends of Coddington School: This is our PTA group. If you would like to get involved, please contact the chair, Natalie Henstock Email: friendsofcoddington@outlook.com

Ask Us Notts: local information and advice for Nottinghamshire residents. www.askusnotts.org.uk

Food Bank: Collingham Food Pantry collinghamfoodbank@gmail.com

Home-Start Newark: Home-Start Newark helps families with young children deal with whatever life throws at them. They support parents as they learn to cope, improve their confidence and build better lives for their children. Please visit www.homestartnewark.co.uk

Mind: For free mental health and advice. Tel: 0300 123 3393

Newark Women's Aid: Newark Women's Aid is an independent, local charity providing specialist services to support women with or without children who have experienced physical, sexual, emotional, psychological, or economic abuse.
Phone: 01636 679687 Email: newarkwomensaid@btconnect.com

School Calendar

2024-2025



Coddington
— C of E —
Primary and Nursery
School

Term dates for pupils

Autumn term 2024

School opens – Tuesday 3 September 2024
Half term - Monday 21 October 2024 to Friday 1 November 2024.

School closes for Christmas – evening Thursday 19 December 2024.

Spring term 2025

School opens – Monday 6 January 2025
Half term - Monday 17 February 2025 to Friday 21 February 2025.

School closes for Easter – evening Friday 4 April 2025.

Summer term 2025

School opens - Monday 22 April 2025
Half term – Monday 26 May 2025 to Friday 30 May 2025.

School Closes for the summer – evening Friday 25 July 2025.

SEPTEMBER							OCTOBER							NOVEMBER						
M	T	W	T	F	S	S	M	T	W	T	F	S	S	M	T	W	T	F	S	S
2	3	4	5	6	7	8	1	2	3	4	5	6	1	2	3					
9	10	11	12	13	14	15	7	8	9	10	11	12	13	4	5	6	7	8	9	10
16	17	18	19	20	21	22	14	15	16	17	18	19	20	11	12	13	14	15	16	17
23	24	25	26	27	28	29	21	22	23	24	25	18	19	20	21	22	23	24		
30							28	29	30	31	25	26	27	28	29	30				

DECEMBER							JANUARY							FEBRUARY						
M	T	W	T	F	S	S	M	T	W	T	F	S	S	M	T	W	T	F	S	S
						1	1	2	3	3	4	5	6	7	8	9	1	2		
2	3	4	5	6	7	8	6	7	8	9	10	11	12	3	4	5	6	7	8	9
9	10	11	12	13	14	15	13	14	15	16	17	18	19	10	11	12	13	14	15	16
16	17	18	19	20	21	22	20	21	22	23	24	25	26	17	18	19	20	21	22	23
23	24	25	26	27	28	29	27	28	29	30	31	24	25	26	27	28				

MARCH							APRIL							MAY						
M	T	W	T	F	S	S	M	T	W	T	F	S	S	M	T	W	T	F	S	S
						1	1	2	3	4	5	6	1	2	3	4				
3	4	5	6	7	8	9	7	8	9	10	11	12	13	5	6	7	8	9	10	11
10	11	12	13	14	15	16	14	15	16	17	18	19	20	12	13	14	15	16	17	18
17	18	19	20	21	22	23	21	22	23	24	25	26	27	19	20	21	22	23	24	26
24	25	26	27	28	29	30	28	29	30	31	26	27	28	29	30	31				
31																				

JUNE							JULY							AUGUST						
M	T	W	T	F	S	S	M	T	W	T	F	S	S	M	T	W	T	F	S	S
						1	1	2	3	4	5	6	1	2	3					
2	3	4	5	6	7	8	7	8	9	10	11	12	13	4	5	6	7	8	9	10
9	10	11	12	13	14	15	14	15	16	17	18	19	20	11	12	13	14	15	16	17
16	17	18	19	20	21	22	21	22	23	24	25	26	27	18	19	20	21	22	23	24
23	24	25	26	27	28	29	28	29	30	31	25	26	27	28	29	30	31			
30																				

Administration Day

Public Holidays

School Holidays