



Coddington

— C of E —

Primary and Nursery
School

Welcome to Foundation 2

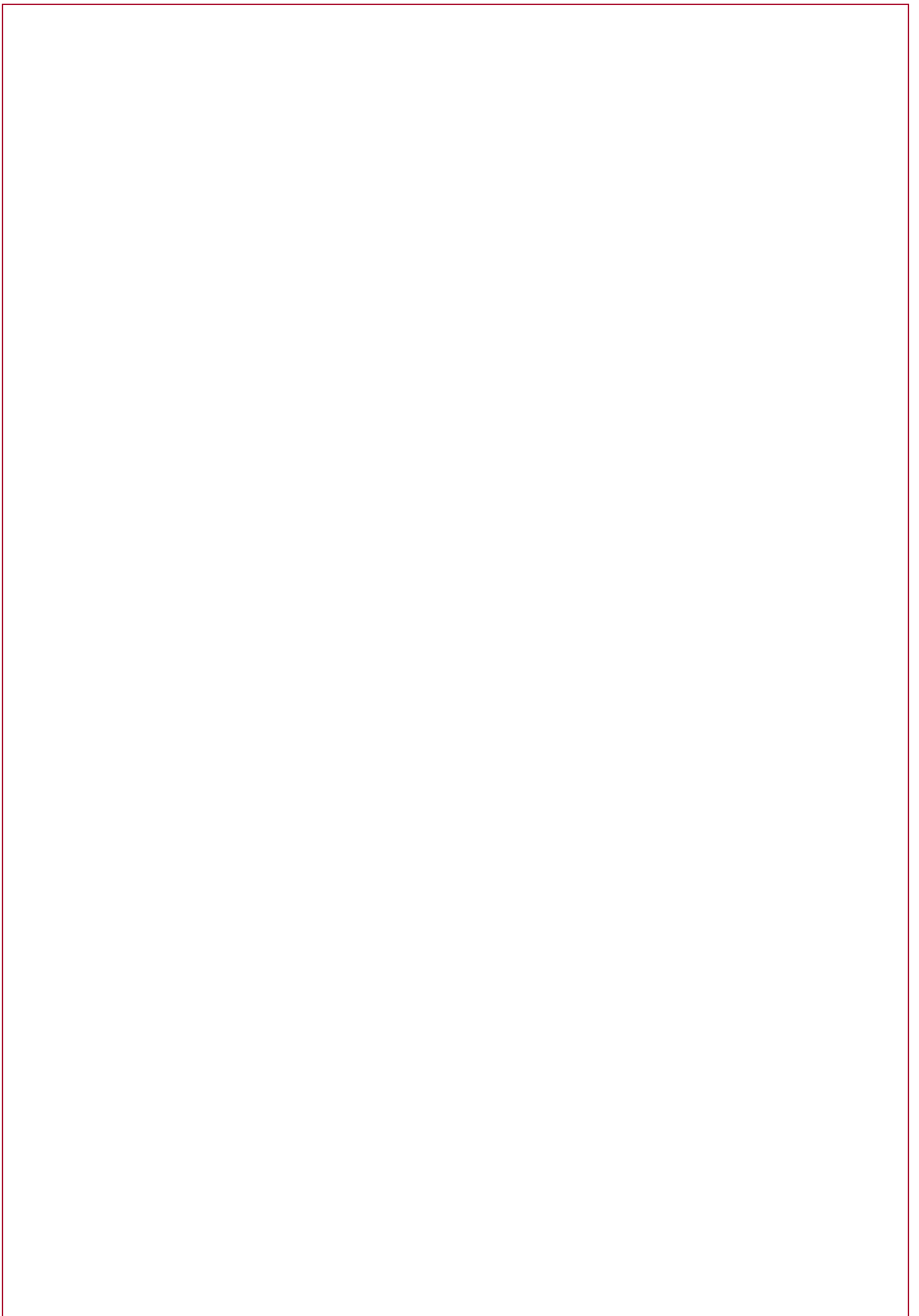
2024 - 2025

Teaching Team:

Miss Cumper, Miss Young and Mrs Chappell

Mrs Fowler (HLTA), Mrs Whitehead (HLTA)

Mr West (Sports Coach)



Welcome from the Headteacher

I am delighted to introduce you to your child's next year of learning. This booklet aims to provide you with an overview of the broad curriculum your child will engage with over the coming academic year. It also details the enrichment opportunities teachers have planned to enhance the children's knowledge, skills and experience.

It is important to me that our school develops the whole child, and I am committed to creating a positive and nurturing environment where all children can explore, learn and grow, both personally and academically.

Our school vision is:

We value each child for who they are and prepare them for who they can become.

Our school values are:

Care, Community and Courage

As a school, we recognise that everyone matters, we are all neighbours, and we must act with both compassion and bravery. We want children to be inquisitive of the world around them and reach for the best in themselves.

As a Church of England school, we believe the verse that represents what we are aiming to achieve is:

'Encourage one another and build each other up' (Thessalonians 5:11)

It is essential that the school works in partnership with parents and carers, and effective communication between home and school is key. We use Class Dojo as our main form of communication however you can find additional details on the curriculum on our school website.

Thank you for your continued support and I look forward to seeing your child flourish.

Mrs R. Major

Foundation 2 Curriculum

DISCOVER TERM (History Focus): Are we all the same?

Autumn 1 - All about me

- Getting to know you, discussions around when we were little. How are we the same? How are we different? Past and present.

Autumn 2 - Celebrations

- Exploring different celebrations from around the world – identifying the similarities and differences.

EXPLORE TERM (Geography Focus): Will I find a penguin in the desert?

Spring 1 – Weather

- The four seasons, researching different weather conditions in hot and cold climates. Partake Theatre Company – Pirate Island

Spring 2 – Countries

- Exploring countries around the world – the animals that live there and plants that grow there. Trip to White Post Farm linking to plants and animals.

CREATE TERM (Art Focus): I wonder where art can be found?

Summer 1 – Art through stories

- Exploring the artwork in different storybooks – The Day the Crayons Quit, The Dot, The Beautiful Oops.

Summer 2 – Seaside

- Exploring art in our natural environment (the seaside), George Seurat

Literacy Writing:

- Write recognisable letters, most of which are correctly formed.
- Spell words by identifying sounds in them and representing the sounds with a letter or letters.
- Write simple phrases and sentences that can be read by others.

Maths:

- Repeating patterns
- Have a deep understanding of number to 10, including the composition of each number.
- Subitise (recognise quantities without counting) up to 5.
- Automatically recall (without reference to rhymes, counting or other aids) number bonds up to 5 (including subtraction facts) and some number bonds to 10, including double facts.
- Length, weight and capacity

Books we will read:

The Colour Monster
Freddie and the Fairy
When I was Little
The Tiger Who Came To Tea
Jesus' Christmas Party
The Jolly Christmas Postman
Penguin Small
The Great Explorer
The Ugly Five
Paddington's Post
Emma Jane's Aeroplane
Little People Big Dreams – David Attenborough
The Day the Crayons Quit
The Dot
Beautiful Oops
Sharing a Shell
The Storm Whale
Clean Up

Projects we will create:

- Baking
- Making boats
- Under the sea dioramas

Phonics:

- Fred Talk (oral blending)
- Set 1 and 2 sounds

Sport/PE we will practise:

- Throwing
- Catching
- Kicking
- Passing
- Running
- Jumping
- Dancing
- Hopping

Music we will hear:

- Nativity songs
- Nursery rhymes
- Action songs
- Songs during singing Collective Worship

PSHE topics:

- Who am I and how do I fit?
- Respect for similarity and difference
- Anti-bullying
- Being unique
- Being and keeping safe and healthy
- Building positive, healthy relationships
- Coping positively with change



Coddington

— C of E —
Primary and Nursery
School

RE:

- Celebrations
- Stories
- Belonging
- Special places
- Special people
- Caring for our world

Computing:

- The different uses of technology
- Respecting the work of others online
- Staying safe online

Calendar of Events

September	British Values Day – 13 th School photos – 18 th RWI parent meeting – 19 th – 3:30pm
October	Parents' Evening – 8 th and 10 th Harvest festival – 10 th Neon Theme School Disco – 18 th (during the school day)
November	Discover Whole School Day (focus on WW2) – 8 th Children in Need (non-uniform day) – 15 th
December	Christmas Fair – 6 th (5:30pm – 7:30pm) Nativity – 11 th - 10am and 2pm Whole School Pantomime (Newark Palace Theatre) – 12 th Christmas Jumper and Christmas Dinner Day – 13 th Christmas Party (in class) – 19 th INSET Day – 20 th
January	Partake Theatre Company – 23 rd
February	Sound of Music Dance Workshop – 3 rd Explore Day (Focus on Africa) – 11 th Rockstar Theme Spring Disco – 13 th INSET Day – 14 th
March	World Book Day (either fancy dress or pyjamas) – 5 th Golden Ticket Chocolate Bar Sale - TBC Science Day – 13 th Red Nose Day – break the rules day (more details to follow!) – 21 st Parents Evening – 25 th and 27 th White Post Farm Trip – Wednesday 26 th Mothering Sunday Pop-up shop
April	Easter Bonnet Parade – 4 th
May	Create Day (Focus on the Purpose of Art) – 16 th School photos – 19 th Sponsored Colour Run – TBC
June	INSET Day – 2 nd Music Create Day – 5 th Artist Workshop – TBC Father's Day Pop-up shop Sports Day – 26 th – EYFS pm
July	New Class Details – 11 th Transition Afternoon – 16 th Reports – 18 th Bounce About – 22 nd

Trips and Event Costings

<i>Date</i>	<i>Trip/ Event</i>	<i>Cost</i>	<i>Payment Due</i>
11 th December	Nativity	Costume	N/A
12 th December	Trip to Newark Palace Theatre to watch the pantomime	£16	6 th Oct
23 rd January	Partake Theatre Company	£9	22 nd January
22 nd February	Music and Dance Workshop	£3.50	21 st February
26 th March	White Post Farm	£20	10 th March
4 th April	Easter bonnet parade	Easter bonnet	N/A
June	Artist Workshop	£2	June
5 th June	Drumming workshop	£2.50	4 th June
22 nd July	Bounce About	£3.50	21 st July

*All costs are correct at the time of printing

Parent Pay

We are a cashless school and collect all payments for trips and events through a website called ParentPay.

The school office will provide you with login details and as a family you will be able to manage the payments.

If you are in receipt of free school meals, please contact the office for reduced amounts or flexible payment options. If you are not in receipt of free school meals but will struggle to fund these activities, please talk to the office or you may want to consider contacting Coddington Trust Fund who support local families.

General Information

Uniform

Our uniform is:

- Burgundy jumper or cardigan
- Pale blue polo shirt
- Dark grey trousers, dress or skirt. (In summer this can be substituted for shorts or a pale blue summer dress)
- Plain black shoes (not trainers)
- Children may wear single studs in their ears but we ask that children do not wear any other jewellery



PE uniform

- Black hooded top, Pale blue t-shirt, Black tracksuit trousers or shorts
- Trainers

Please note, it is not compulsory for children to have the school logo on their clothes.

School Meals

We provide a fresh healthy nutritious meal cooked from scratch every day using locally sourced produce from our award-winning suppliers.

Families can decide daily if they would like their child to have:

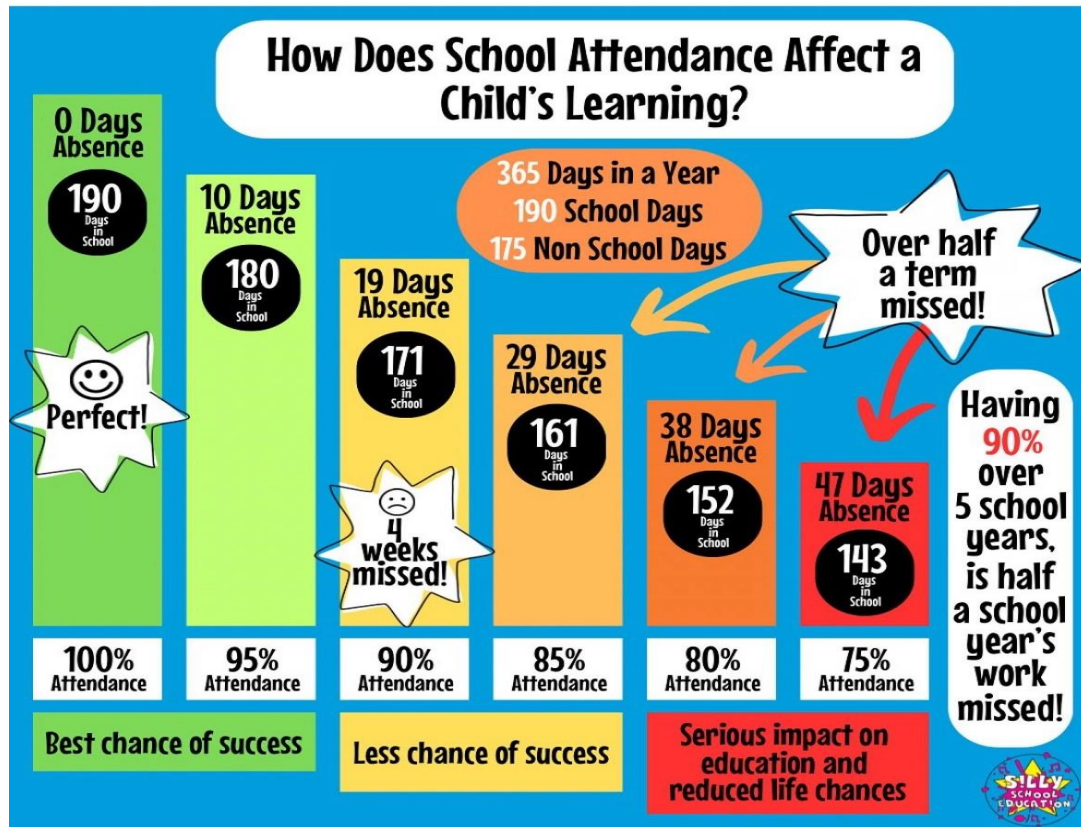
- A hot dinner, a three-week menu is provided on the website
- A cold meal, either cheese, ham or tuna mayonnaise sandwich
- A panini, either cheese or ham
- A jacket potato with cheese, cheese and beans or tuna mayonnaise

Children can also bring in a healthy packed lunch (no hot food please).

Whilst the register is being taken in the morning the children will be asked what they are having for lunch. There is no need to pre-order.

Payments will be added to ParentPay, except for Reception, Year 1 and Year 2 children who are eligible for universal free school meals.

Attendance



We know that sometimes our pupils cannot come to school because they are really unwell - and that's the right thing to do for them and other pupils. Medical advice is clear however that children with mild illness will often be well enough to attend - for example if they have a cough, or cold, without a temperature. The NHS also states that children who are taking antibiotics can still attend school. The NHS guidance 'Is my child too ill for school?' - NHS (www.nhs.uk) is designed to support parents in their decision making about mild illness.

We also know that pupils fall behind their friends and classmates when they miss school. We want the amount of missed education to be reduced as much as possible.

We believe that our community is stronger together, with all our pupils in school, on time, every day.

We are building life skills, life-long friendships and preparing your child for future success – we can only do this, if they are in school.

How to help your child

The best way to support your child's learning is for your child to attend school daily, on time and ready to learn!

Other ways you could support your child's learning are listed below:

Maths

- Encourage your child to count objects independently e.g. pass me 3 carrots
- Watch Numberblocks videos

Reading

- Read daily with your child
- Use the Read, Write, Inc. video links that will be sent home via Dojo

Spelling

- Encourage your child to use 'Fred Fingers' when spelling
- Practise spelling red words

Topic /other

- Share baby photos of your child and other family members and discuss what life was like in the past
- Explore the natural environment outdoors in all seasons and discuss the similarities and differences

Signposting

Safeguarding: If you have a safeguarding concern, please consider if you need to contact the police or MASH (0300 500 80 90) first. If you do need to contact the school please email safeguarding@coddington.notts.sch.uk

Family Engagement Officer: Mrs Hanstock works closely with school staff, local community services, preventative services, and social services to ensure that the needs of the children are being met. She also supports children's pastoral needs including emotional, social, welfare, care and health.
Tel: 01636 702974 Email: n.hanstock@coddington.notts.sch.uk

Pupil Premium: Mrs Penn is our Pupil Champion and leads on the funding and support for Pupil Premium, Looked After Children and Post Looked After Children.
Tel: 01636 702974 Email: l.penn@coddington.notts.sch.uk

SENDCo: Mrs Mercer is our Special Educational Needs and Disability Co-ordinator and leads on the funding and support for SEND and EAL children.
Tel: 01636 702974 Email: c.mercer@coddington.notts.sch.uk

Speech and Language: Mrs Connor leads on SALT across the school. If you are concerned about your child's speech, please contact Mrs Connor or your class teacher.
Tel: 01636 702974 Email: r.connor@coddington.notts.sch.uk

Ask Us Notts: local information and advice for Nottinghamshire residents. www.askusnotts.org.uk

Food Bank: Collingham Food Pantry deliver food to the school collinghamfoodbank@gmail.com

Home-Start Newark:

Home-Start Newark helps families with young children deal with whatever life throws at them. They support parents as they learn to cope, improve their confidence and build better lives for their children. www.homestartnewark.co.uk

Mind:

For free mental health and advice. Tel: 0300 123 3393

Newark Women's Aid:

Newark Women's Aid is an independent, local charity providing specialist services to support women with or without children who have experienced physical, sexual, emotional, psychological, or economic abuse.

Phone: 01636 679687 Email: newarkwomensaid@btconnect.com

School Calendar

2024-2025



Coddington
— C of E —
Primary and Nursery
School

Term dates for pupils

Autumn term 2024

School opens – Tuesday 3 September 2024
Half term - Monday 21 October 2024 to Friday 1 November 2024.

School closes for Christmas – evening Thursday 19 December 2024.

Spring term 2025

School opens – Monday 6 January 2025
Half term - Monday 17 February 2025 to Friday 21 February 2025.

School closes for Easter – evening Friday 4 April 2025.

Summer term 2025

School opens - Monday 22 April 2025
Half term – Monday 26 May 2025 to Friday 30 May 2025.

School Closes for the summer – evening Friday 25 July 2025.

SEPTEMBER							OCTOBER							NOVEMBER						
M	T	W	T	F	S	S	M	T	W	T	F	S	S	M	T	W	T	F	S	S
2	3	4	5	6	7	8	1	2	3	4	5	6	1	2	3					
9	10	11	12	13	14	15	7	8	9	10	11	12	13	4	5	6	7	8	9	10
16	17	18	19	20	21	22	14	15	16	17	18	19	20	11	12	13	14	15	16	17
23	24	25	26	27	28	29	21	22	23	24	25	18	19	20	21	22	23	24		
30							28	29	30	31	25	26	27	28	29	30				

DECEMBER							JANUARY							FEBRUARY						
M	T	W	T	F	S	S	M	T	W	T	F	S	S	M	T	W	T	F	S	S
						1	1	2	3	3	4	5	6	7	8	9	1	2		
2	3	4	5	6	7	8	6	7	8	9	10	11	12	3	4	5	6	7	8	9
9	10	11	12	13	14	15	13	14	15	16	17	18	19	10	11	12	13	14	15	16
16	17	18	19	20	21	22	20	21	22	23	24	25	26	17	18	19	20	21	22	23
23	24	25	26	27	27	28	29	30	31	24	25	26	27	28						

MARCH							APRIL							MAY						
M	T	W	T	F	S	S	M	T	W	T	F	S	S	M	T	W	T	F	S	S
							1	2	3	4	5	6	1	2	3	4				
3	4	5	6	7	8	9	7	8	9	10	11	12	13	5	6	7	8	9	10	11
10	11	12	13	14	15	16	14	15	16	17	18	19	20	12	13	14	15	16	17	18
17	18	19	20	21	22	23	21	22	23	24	25	26	27	19	20	21	22	23	24	26
24	25	26	27	28	29	30	28	29	30	31	26	27	28	29	30	31				
31																				

JUNE							JULY							AUGUST						
M	T	W	T	F	S	S	M	T	W	T	F	S	S	M	T	W	T	F	S	S
							1	2	3	4	5	6	1	2	3					
2	3	4	5	6	7	8	7	8	9	10	11	12	13	4	5	6	7	8	9	10
9	10	11	12	13	14	15	14	15	16	17	18	19	20	11	12	13	14	15	16	17
16	17	18	19	20	21	22	21	22	23	24	25	26	27	18	19	20	21	22	23	24
23	24	25	26	27	28	29	28	29	30	31	25	26	27	28	29	30	31			
30																				

Administration Day

Public Holidays

School Holidays